

# Fréttarit KOS

Nr. 29

Tölur síðustu sex mánuði ársins 2002  
og fyrstu sex mánuði ársins 2003

**KJARARANNSÓKNARNEFND OPINBERRA STARFSMANNA (KOS)**  
**skipa nú eftirtaldir aðilar:**

**Fulltrúar atvinnurekenda:**

Birgir Björn Sigurjónsson  
Gunnar Björnsson  
Hrönn Pálsdóttir  
Karl Björnsson  
- óskipað

**Fulltrúar launafólks:**

Árni Sigurjónsson  
Eiríkur Jónsson  
Gunnar Gunnarsson  
Jens Andrésson  
Helga Birna Ingimundardóttir

Framkvæmdastjórn **KOS** skipa:

Birgir Björn Sigurjónsson, Gunnar Gunnarsson, Helga Birna Ingimundardóttir  
og Hrönn Pálsdóttir

Skrifstofa **KOS**

Framkvæmdastjóri : Geir Thorsteinsson  
Fulltrúi :

Heimilisfang :

KJARARANNSÓKNARNEFND OPINBERRA STARFSMANNA  
BORGARTÚNI 21, 4. hæð.  
105 REYKJAVÍK

Síminn hjá KOS er: 562 - 6030

Netfang: kos@simnet.is  
Heimasíða á Netinu: <http://www.simnet.is/kos>

***EFTIRPRENTUN ER HEIMIL ÚR RITINU, ENDA SÉ UPPRUNA GETIÐ***

**ISSN 1027-4081**

KJARARANNSÓKNARNEFND OPINBERRA STARFSMANNA starfar samkvæmt  
34. grein laga nr. 94/1986 um kjarasamninga opinberra starfsmanna, sem hljóðar þannig:

Á vegum þeirra aðila, sem lög þessi taka til, starfi nefnd er annist  
kjararannsóknir og aðra upplýsingaöflun vegna kjarasamninga.

Nefndin skal skipuð jafnmörgum fulltrúum stéttarféлага og vinnuveitenda  
samkvæmt nánari ákvæðum í reglugerð sem sett skal að fengnum tillögum heildarsamtaka  
opinberra starfsmanna og Sambands íslenskra sveitarféлага.

Nefndin setur sér starfsreglur, m.a. um starfssvið og starfshætti.

Kostnaður við störf nefndarinnar greiðist úr ríkissjóði.

# FRÉTTARIT KOS

## Nr. 29

Október 2003

Tölur síðustu sex mánuði ársins 2002  
og fyrstu sex mánuði ársins 2003

**Útgefandi:**     **Kjararannsóknarnefnd  
opinberra starfsmanna**

Skrifstofa KOS:   Borgartúni 21, 4. hæð  
105 REYKJAVÍK  
Sími: 562-6030

Netfang: [kos@simnet.is](mailto:kos@simnet.is)

Heimasíða KOS: <http://www.simnet.is/kos>

## Efnisyfirlit

<b>1. Fréttarit KOS Nr. 27</b>	
1.1 Skýringar .....	5
1.2 Frá framkvæmdastjórn KOS .....	7
1.3 Listi yfir stéttarfélög og hópa sem eru í heftinu .....	8
<b>2. Starfsmenn ríkis og Reykjavíkurborgar</b>	
2.1 Yfirlit um skiptingu og fjölda opinberra starfsmanna .....	9
2.2 Meðallaun opinberra starfsmanna ríkis og Reykjavíkurborgar .....	10
2.3 Dreifing dagvinnulauna stéttarfélaga og hópa eftir kyni í maí 2002 .....	12
<b>3. Meðaltal dagvinnulauna, yfirvinnulauna og annarra launa</b>	
3.1 BSRB, ríkisstarfsmenn .....	17
3.2 BHM, ríkisstarfsmenn .....	23
3.3 Kennarasamband Íslands, ríkisstarfsmenn .....	36
3.4 Ýmsir, ríkisstarfsmenn .....	37
3.5 Starfsmenn Reykjavíkurborgar .....	45
<b>4. Starfsmenn annarra sveitarfélaga</b>	
4.1 Inngangur .....	49
4.2 Meðaltöl hjá nokkrum sveitarfélögum árið 2001 .....	50
<b>5. Ýmislegt</b>	
5.1 Vísitala neysluverðs (framfærsluvísitala) með grunn 1981: .....	52

# 1. Fréttarit KOS

## 1.1 Skýringar

Í þessari útgáfu eru starfsmenn ríkisins, sem fá greidd laun sem unnin eru í launavinnslukerfi ríkisins og starfsmenn Reykjavíkurborgar sem fá laun úr launavinnslukerfi Reykjavíkurborgar. Jafnframt eru í heftinu launaupplýsingar frá nokkrum öðrum sveitarfélögum en

Reykjavíkurborg. Áfram er unnið að því að taka inn hópa frá fleiri bæjar- og sveitarfélögum og fyrst um sinn er miðað við að fá tölur frá öllum kaupstöðum svo og öðrum sveitarfélögum, sem hafa fleiri en 1000 íbúa.

### Skýringar:

GR. STG.	=	Greidd stöðugildi í dagvinnu (Stg.)
STÖÐUGILDI	=	Samanlagt starfshlutfall starfsmanna í hverjum hóp. (STG).
DAGVINNUL.	=	Laun og aðrar greiðslur sem greiddar eru fyrir dagvinnutíma, (Dl.)
YFIRVL.	=	Greidd laun fyrir yfirvinnu. (Yl.)
ÖNNUR L.	=	Öll önnur greidd laun á launaseðlum. (Öl.)
HEILDARL.	=	Summan af dagvinnulaunum, yfirvinnulaunum og öðrum launum (Hl.)
MEÐAL MÁN- AÐARLAUN	=	Summa dagvinnulauna deilt með summu stöðugilda fyrir hvert félag eða hóp

Breyting var gerð á vinnslu dagvinnulauna frá og með 1990. Öll laun sem tilheyra dagvinnu reiknast nú sem dagvinnulaun og um leið reiknast þau yfir í hlutfall stöðugilda og koma þar einnig til viðbótar.

Á undanförunum árum hafa orðið breytingar á aðild stéttarfélaganna að bandalögum og hópar starfsmanna, sem áður voru í tilteknu stéttarfélagi, hafa stofnað ný en dæmi eru einnig um stéttarfélög sem hafa sameinast. Þá hafa orðið umfangsmiklar breytingar á tímabilinu á

hópunum „Kjaradómur“ og „Utan félaganna“ einkum vegna setningar laga nr. 120/1992 um Kjaradóm og kjaranefnd, sem leiddi m.a. til þess að stofnað var til hópsins „Kjaranefnd“ frá mars 1993. Í kjölfar setningar laga nr. 70/1996 og afleiddra lagabreytinga á sérlögum hafa enn orðið tilfærslur í hópunum „Kjaradómur“ og „Kjaranefnd“. Þessar breytingar hafa falið í sér að einstaklingar sem voru yfirleitt áður í stéttarfélögum (háskólanna) hafa verið settir undir Kjaradóm og Kjaranefnd. Þá var með lögum ákveðið að frá 1. ágúst 1996

skyldu kennarar og skólastjórnendur við grunnskóla vera starfsmenn sveitarfélaga. Ekki eru gerðar sérstakar ráðstafanir til að reikna hópa, félög eða bandalög afturvirkir út frá breyttum forsendum. Í flestum tilvikum byrja slíkir hópar eða félög frá þeim tíma sem til þeirra er stofnað. Stjörnumerkt er við slík félög

og getið upphafstímabilis sem kaupmáttarútreikningur miðast við.

Athuga ber að meðaltölur launa sumarmánaða eru að jafnaði lægri en aðra mánuði vegna afleysinga og ráðninga sumarfólks.

Ástæða er til að vekja sérstaka athygli á breyttum hlutföllum launategunda hjá mörgum stéttarfélögum, sem m.a. má rekja til nýja launakerfisins, sem tók gildi í kjölfar kjarasamninga á árabílinu 1997 - 2002. Dagvinnulaunahluti þeirra eykst en yfirvinnuhluti minnkar.

Jafnframt geta verið sveiflur í launum á milli mánaða hjá einstökum stéttarfélögum og/eða hópum vegna afturvirkra leiðréttinga á launum.

## 1.2 Frá framkvæmdastjórn KOS

Í þessu hefti KOS eru upplýsingar á grunni frá og með árinu 1990. Eins og áður er unnið úr öllum greiddum launum frá viðkomandi launaskrifstofum.

Kosturinn við þessar upplýsingar, umfram þær sem fást við kaup og kjör annarra en þeirra er vinna hjá ríki og borg, er að hér er **ekki um úrtak** að ræða. Upplýsingarnar ná til launa, sem skráð eru í launavinnslukerfi ríkisins og launavinnslukerfi Reykjavíkurborgar. Þar með er ekki sagt að efnið sé gallalaust.

Tölurnar sýna laun allra þeirra, sem í starfi eru á hverjum tíma. Þetta getur valdið erfiðleikum í samanburði. T.d. lækka meðaldagvinnulaun flestra stéttarféлага yfir sumarmánuðina, vegna þess að sumarafleysingafólkið kemur inn í lægstu starfsaldursþrepin og verður að taka tillit til þess, þegar sumarmánuðirnir eru bornir saman við aðra mánuði.

Meðallaun og kaupmáttur lítilla hópa, geta breyst mjög mikið við það eitt, að nokkrir starfsmenn í efsta starfsaldursþrepi fara á eftirlaun en nýliðar taka við.

Stærsta vandamálið er þó að ná í samanburðarhæfar tölur um laun og aðrar

greiðslur til launþega á almennum vinnu-umarkaði og þeirra opinberu starfsmanna sem ekki eru í launavinnslukerfi ríkisins eða launavinnslukerfi Reykjavíkurborgar

KOS vinnur að því m.a. að finna leiðir til að endurbæta talnaefnið með tilliti til ofantalinna þátta.

Breytingar voru gerðar á útliti og innihaldi 20. Fréttarits KOS. Meðallaun á félög og hópa voru kyngreind, ef fjöldi karla eða kvenna nær 10 stöðugildum. Myndir sýna nú dreifingu dagvinnulauna innan hvers félags/hóps. Markmiðið með breytingunum er að gefa lesendum betri upplýsingar. Ætlunin er að fitja upp á frekari breytingum í framtíðinni.

## 1.3 Listi yfir stéttarfélög og hópa sem eru í heftinu

### **BSRB, ríkisstarfsmenn**

Félag flugmálastarfsmanna ríkisins  
Félag starfsmanna stjórnarráðsins  
Landssamband Lögreglumanna  
Sjúkraliðafélag Íslands  
Starfsmannafélag ríkisútvarpsins  
Starfsmannafélag sjónvarpsins  
Starfsmannafélag ríkisstofnana, tæknih.  
Starfsmannafélag ríkisst., skrifstofuh.  
Starfsmannafélag ríkisstofnana, heilbr.h.  
Starfsmannafélag ríkisstofnana, alls  
Tollvarðafélag Íslands  
BSRB félögin hjá ríkinu, alls

### **BHM, ríkisstarfsmenn**

Félag tækniskólakennara  
Kennarafélag KHÍ (Kennaraháskóla Íslands)  
Dýralæknafélag Íslands  
Stéttarfélag sálfræðinga á Íslandi.  
Stéttarfélag sjúkraþjálfara  
Iðjuþjálfafélag Íslands  
Stéttarfélag íslenskra félagsráðgjafa  
Meinataeknafeleg Íslands  
Félag íslenskra geislafræðinga  
Félag íslenskra náttúrufræðinga  
Fél. ísl. félagsvísindamanna  
Félag íslenskra fræða - kjaradeild  
Ljósmeðrafélag Íslands  
Stéttarfélag bókasafns- og upplýsingafræðinga  
Félag fréttamanna  
Félag háskólakennara  
Félag háskólakennara á Akureyri  
Fél. háskólam. starfsm. stjórnarráðsins  
Félag íslenskra hjúkrunarfræðinga  
Kjaraf. viðskipta- og hagfræðinga  
Stéttarfél. háskólam. á matvæla- og næringsviði  
Stéttarfélag lögfræðinga  
Útgardur, félag háskólamanna  
Þroskaþjálfafélag Íslands  
BHM félögin hjá ríkinu, alls

### **Kennarasamband Íslands**

Kennarasamband Íslands framhaldsskólar

### **Ýmsir hópar ríkisstarfsmanna**

Félag íslenskra flugumferðarstjóra  
Kjarafélag Tæknifræðingafélags Íslands  
Læknafeleg Íslands  
Starfsmannafél. Sinfóníuhlj. Íslands  
Stéttarfélag verkfræðinga  
Kjaranefnd heilsugæslulækna  
Kjaranefnd prófessorar  
Kjaradómur  
Kjaradómur, dómara  
Kjaranefnd  
Leikarafélag Íslands  
Utan félaga  
Kjaranefnd prestar þjóðkirkjunnar  
Stéttarfélag íslenskra lyfjafræðinga  
Starfsmannafélag Alþingis

### **Reykjavíkurborg**

Starfsmannafélag Reykjavíkurborgar  
án háskólahóps  
Starfsmannafélag Reykjavíkurborgar, háskólahópur  
Starfsmannafélag Reykjavíkurborgar alls  
Félag íslenskra leikskólakennara hjá Rborg.  
Sjúkraliðafélag Íslands  
Háskólahópur innan BHM  
Háskólahópur utan bandalaga  
Kennarahópur hjá Rborg

### **Önnur sveitarfélög.**

Kos hefur m.a. að markmiði að safna upplýsingum frá öllum kaupstöðum og þeim sveitarfélögum sem hafa 1000 íbúa eða fleiri. Launakerfin sem notuð eru í sveitarfélögum hafa verið undirbúin til þess að skila gögnum, eða þá að verið er að undirbúa þau til þess að geta skilað þessum gögnum til KOS. Jafnframt hafa sum sveitarfélögin verið að skipta um tölvukerfi. Kjaranannsóknarnefnd (ASÍ og SA, skammstafað KRN) hefur unnið að því undanfarið ár að þróa prófunarforrit á þessi gögn. Áfram munu KOS og KRN safna upplýsingum sameiginlega frá sveitarfélögum. Í þessu hefti KOS eru ekki nýjar upplýsingar frá öðrum sveitarfélögum en Reykjavíkurborg, vegna starfsmannaskorts.



## 2. Starfsmenn ríkis og Reykjavíkurborgar

Hér á eftir fer yfirlit um samsetningu hópa og bandalaga skipt eftir kyni, upplýsingar um meðallaun og að síðustu

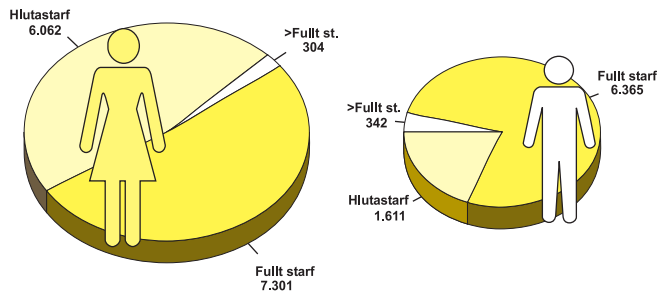
dreifing dagvinnulauna karla og kvenna skipt eftir stéttarfélögum/hópum.

### 2.1 Yfirlit um skiptingu og fjölda opinberra starfsmanna ríkis og Reykjavíkurborgar í maí 2003

Alls voru 21.985 einstaklingar í gagnasafninu í maí 2003. Það svarar til u.þ.b. 14 % af fjölda vinnandi manna á Íslandi.

Konur voru 13.667 og karlar voru 8.318.

#### Mynd 2.1.1. Skipting fjölda eftir kyni og hlutfalli starfs



Taflan hér á eftir sýnir skiptingu starfsmanna eftir kyni og starfshlutfalli innan bandalaga og hópa. Eingöngu er um að ræða ríkisstarfsmenn neðangreindra bandalaga og hópa.

Tölurnar fyrir Reykjavíkurborg sýna skiptingu allra opinberra starfsmanna Reykjavíkurborgar.

Tafla 2.1.1 Skipting fjölda eftir hópum, kynjum og hlutfalli starfs.

Hópur	Kyn	Hlutastarf		Fullt starf		>Fullt starf		Samtölur	
		Fjöldi	Hlutfall	Fjöldi	Hlutfall	Fjöldi	Hlutfall	Fjöldi	Hlutfall
BSRB ríkisstarfsmenn	Karlar	567	7,61%	1.921	25,77%	99	1,33%	2.587	100,00%
	Konur	2.475	33,20%	2.284	30,64%	109	1,46%	4.868	100,00%
BHM ríkisstarfsmenn	Karlar	203	3,99%	1.289	25,33%	58	1,14%	1.550	100,00%
	Konur	1.576	30,97%	1.864	36,63%	99	1,95%	3.539	100,00%
Kennarasamband Íslands	Karlar	73	5,22%	641	45,85%	7	0,50%	721	100,00%
	Konur	160	11,44%	512	36,62%	5	0,36%	677	100,00%
Ýmsir ríkisstarfsmenn	Karlar	370	14,60%	1.349	53,24%	138	5,45%	1.857	100,00%
	Konur	191	7,54%	450	17,76%	36	1,42%	677	100,00%
Starfsmenn Reykjavíkurborgar	Karlar	398	7,22%	1.165	21,15%	40	0,73%	1.603	100,00%
	Konur	1.660	30,13%	2.191	39,77%	55	1,00%	3.906	100,00%

Hlutfallstölur eru reiknaðar af heildarfjölda einstaklinga innan hvers kyns innan hvers hóps eða bandalags

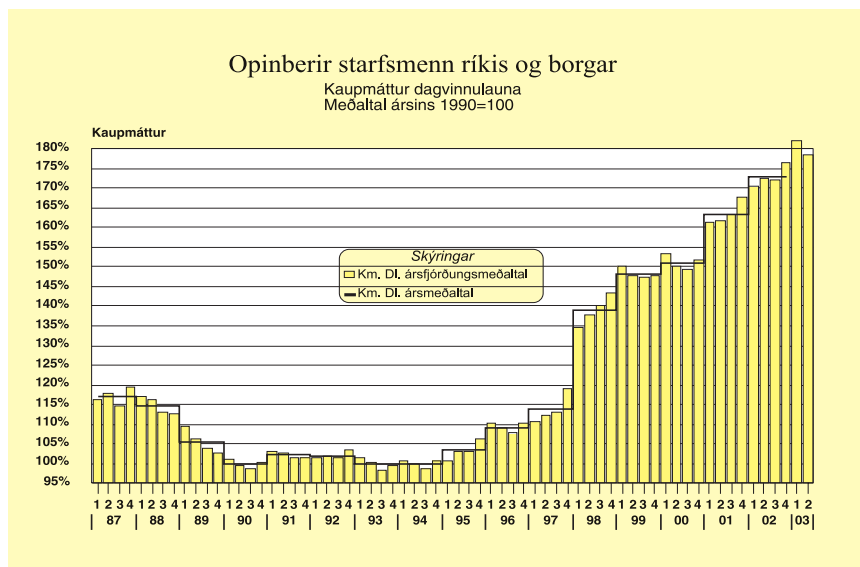
## 2.2 Meðallaun opinberra starfsmanna ríkis og Reykjavíkurborgar frá og með 1. ársfjórðungi 1987. Kaupmáttur miðast við meðaltal ársins 1990 = 100

Ár	Stg.	DI.	Breyting	HI.	Breyting	Km.DI	Km.HI.
1987	16.805,15	49.904		71.855		117,12	115,94
1988	17.515,13	61.496	23,23%	87.804	22,20%	114,76	112,65
1989	18.064,45	68.203	10,91%	97.777	11,36%	105,41	103,89
1990	18.486,49	74.761	9,62%	108.744	11,22%	100,00	100,00
1991	18.497,11	81.604	9,15%	121.686	11,90%	102,21	104,78
1992	19.011,68	84.693	3,79%	126.520	3,97%	102,01	104,77
1993	19.093,22	86.323	1,92%	128.262	1,38%	99,93	102,08
1994	19.539,24	87.785	1,69%	132.140	3,02%	100,06	103,55
1995	19.856,16	92.178	5,00%	138.914	5,13%	103,36	107,09
1996	19.786,59	99.605	8,06%	150.291	8,19%	109,23	113,31
1997	19.016,52	105.545	5,96%	160.072	6,51%	113,71	118,56
1998	17.511,81	131.229	24,33%	189.300	18,26%	138,99	137,84
1999	16.845,24	144.540	10,14%	207.022	9,36%	148,30	146,03
2000	17.980,55	154.867	7,14%	223.304	7,86%	151,11	149,79
2001	17.910,40	178.289	15,12%	252.606	13,12%	163,51	159,27
2002	18.813,88	198.185	11,16%	275.224	8,95%	172,81	164,99

Ár	Ársfj.	Stg.	DI.	Breyting	HI.	Breyting	Km.DI	Km.HI.
1987	1	16.278,38	45.924		67.405		116,34	117,40
	2	16.902,54	48.539	5,69%	71.362	5,87%	117,77	119,04
	3	17.192,63	49.911	2,83%	67.825	-4,96%	114,64	107,10
	4	16.847,04	55.113	10,42%	80.764	19,08%	119,25	120,15
1988	1	16.921,24	57.982	5,21%	84.801	5,00%	117,16	117,81
	2	17.526,45	60.208	3,84%	86.140	1,58%	116,16	114,25
	3	18.013,09	63.401	5,30%	85.895	-0,28%	113,09	105,34
	4	17.599,75	64.208	1,27%	94.302	9,79%	112,71	113,80
1989	1	17.743,25	64.779	0,89%	95.078	0,82%	109,56	110,56
	2	18.210,10	67.116	3,61%	96.240	1,22%	106,13	104,63
	3	18.495,68	68.825	2,55%	94.171	-2,15%	103,70	97,55
	4	17.808,75	72.078	4,73%	105.782	12,33%	102,84	103,76
1990	1	18.022,80	73.616	2,13%	105.445	-0,32%	101,17	99,63
	2	18.304,75	74.121	0,69%	107.576	2,02%	99,63	99,41
	3	19.252,42	74.731	0,82%	102.054	-5,13%	98,85	92,80
	4	18.366,00	76.555	2,44%	120.158	17,74%	100,35	108,29
1991	1	17.878,81	79.648	4,04%	119.665	-0,41%	103,07	106,46
	2	18.667,43	81.055	1,77%	121.795	1,78%	102,83	106,23
	3	19.288,88	82.025	1,20%	114.704	-5,82%	101,33	97,42
	4	18.153,31	83.649	1,98%	130.983	14,19%	101,61	109,39
1992	1	18.659,89	83.934	0,34%	125.462	-4,22%	101,42	104,23
	2	19.206,39	84.287	0,42%	127.366	1,52%	101,76	105,72
	3	19.584,69	84.367	0,09%	117.116	-8,05%	101,43	96,80
	4	18.595,74	86.217	2,19%	136.610	16,65%	103,48	112,72
1993	1	18.531,27	86.341	0,14%	127.949	-6,34%	101,57	103,48
	2	19.210,56	85.963	-0,44%	127.954	0,00%	100,39	102,73
	3	19.799,55	85.587	-0,44%	119.030	-6,97%	98,32	94,01
	4	18.831,49	87.448	2,17%	138.590	16,43%	99,53	108,44
1994	1	18.910,64	88.049	0,69%	130.674	-5,71%	100,78	102,83
	2	19.690,19	87.544	-0,57%	134.501	2,93%	99,94	105,56
	3	20.252,67	86.956	-0,67%	122.102	-9,22%	98,88	95,46
	4	19.303,45	88.641	1,94%	141.699	16,05%	100,72	110,69
1995	1	17.890,62	89.188	0,62%	134.113	-5,35%	100,53	103,93
	2	20.408,56	91.493	2,58%	140.400	4,69%	103,17	108,85
	3	21.116,89	92.109	0,67%	128.459	-8,50%	103,03	98,78
	4	20.008,56	95.622	3,81%	152.724	18,89%	106,35	116,77
1996	1	20.040,51	99.458	4,01%	149.069	-2,39%	110,15	113,50
	2	20.781,34	99.189	-0,27%	150.624	1,04%	109,06	113,86
	3	20.330,94	98.658	-0,54%	138.882	-7,80%	107,69	104,22
	4	17.993,58	101.318	2,70%	164.159	18,20%	110,25	122,81
1997	1	18.517,27	101.711	0,39%	159.611	-2,77%	110,60	115,92
	2	19.308,21	103.895	2,15%	164.881	3,30%	112,22	118,90
	3	19.843,03	105.106	1,17%	153.364	-6,99%	112,88	110,00
	4	18.397,58	111.610	6,19%	182.644	19,09%	119,21	130,01
1998	1	16.957,25	126.325	13,18%	182.724	0,04%	134,40	133,66
	2	17.644,34	130.526	3,33%	189.726	3,83%	137,94	137,85
	3	18.127,02	132.073	1,19%	179.207	-5,54%	140,04	130,63
	4	17.318,64	135.862	2,87%	205.869	14,88%	143,41	149,40
1999	1	16.361,06	143.226	5,42%	202.797	-1,49%	150,30	146,31
	2	16.994,97	142.853	-0,26%	206.290	1,72%	147,82	146,75
	3	17.386,24	144.524	1,17%	196.093	-4,94%	147,22	137,32
	4	16.638,70	147.573	2,11%	223.344	13,90%	147,95	153,94

Ár	Ársfj.	Stg.	DI.	Breyting	HI.	Breyting	Km.DI	Km.HI.
2000	1	17.625,33	154.535	4,72%	221.613	-0,78%	153,30	151,14
	2	18.300,45	153.530	-0,65%	223.291	0,76%	150,17	150,15
	3	18.472,61	153.764	0,15%	212.719	-4,73%	149,47	142,16
	4	17.523,80	157.760	2,60%	236.176	11,03%	151,63	156,06
2001	1	17.449,29	168.690	6,93%	238.655	1,05%	161,18	156,77
	2	18.030,74	174.515	3,45%	252.625	5,85%	161,64	160,87
	3	18.521,30	180.920	3,67%	245.241	-2,92%	163,15	152,04
	4	17.640,28	188.881	4,40%	274.121	11,78%	167,68	167,30
2002	1	19.420,35	194.559	3,01%	266.507	-2,78%	170,49	160,56
	2	18.655,54	197.296	1,41%	277.352	4,07%	172,29	166,51
	3	19.010,89	197.368	0,04%	264.311	-4,70%	172,05	158,41
	4	18.168,74	203.827	3,27%	293.774	11,15%	176,64	175,03
2003	1	18.407,05	211.244	3,64%	289.237	-1,54%	182,00	171,32
	2	19.436,34	208.598	-1,25%	290.388	0,40%	178,48	170,82

Mynd 2.2.1



Ath. að stór hópur ríkisstarfsmanna fellur út úr gagnasafni KOS frá og með áramótum 1996 -1997, s.s. starfsmenn Pósts og Síma og grunnskólakennarar annarra sveitarfélaga en Reykjavíkurborgar.

Ástæða er til að vekja sérstaka athygli á breyttum hlutföllum launategunda hjá mörgum stéttarfélögum, sem m.a. má rekja til nýja launakerfisins, sem tók gildi í kjölfar kjarasamninga sem gerðir voru árið 1997. Dagvinnu-launahluti þeirra eykst en yfirvinnuhluti minnkar.

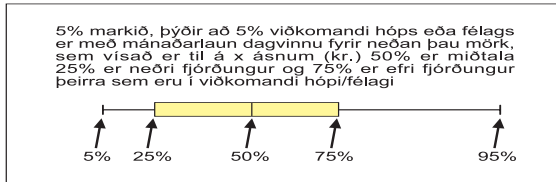
Jafnframt geta verið sveiflur í launum á milli mánaða hjá einstökum stéttarfélögum og/eða hópum vegna afturvirkra leiðréttinga á launum.

## 2.3 Dreifing dagvinnulauna stéttarfélaga og hópa eftir kyni í maí 2003.

Hér á eftir eru sýnd gröf, þar sem er búið að reikna dreifingu mánaðarlauna í dagvinnu hjá stéttarfélögum/hópum. Miðað er við maímánuð 2003 og dagvinnulaun mánaðarins eru eins og áður uppreiknuð

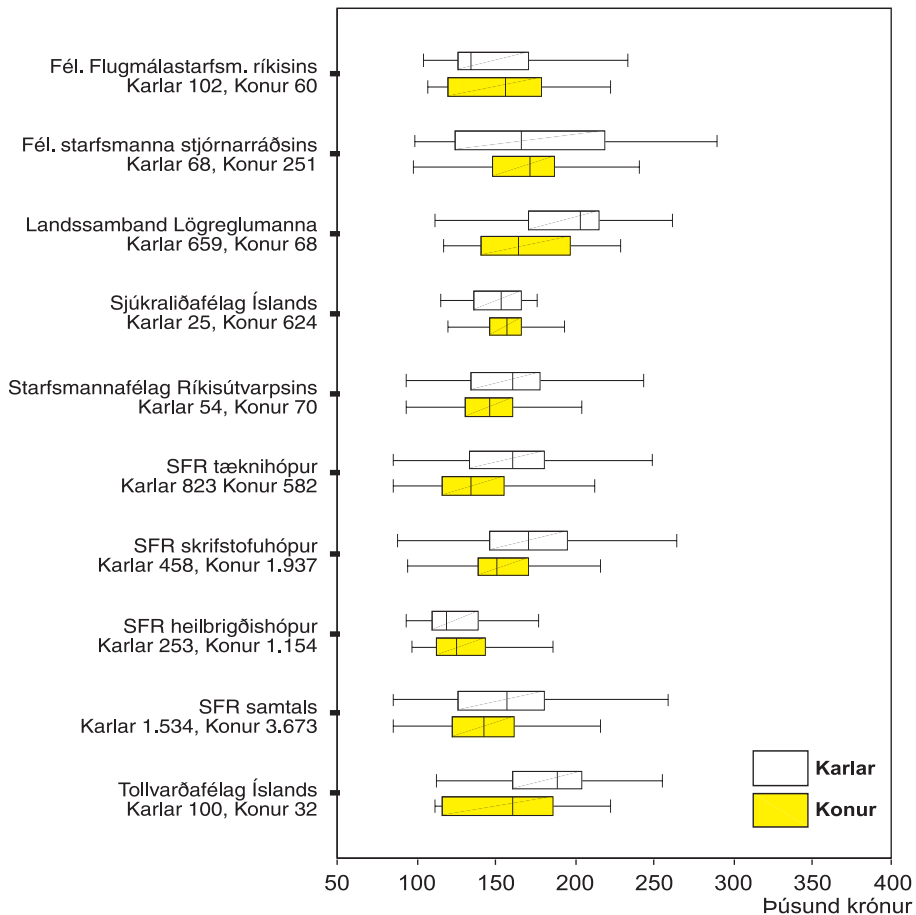
miðað við fullt starf. Starfsmönnum með minna en 10% starf var sleppt. Fjöldi starfsmanna af hvoru kyni er sýndur fyrir neðan nafn hvers félags/hóps.

### Skýring:



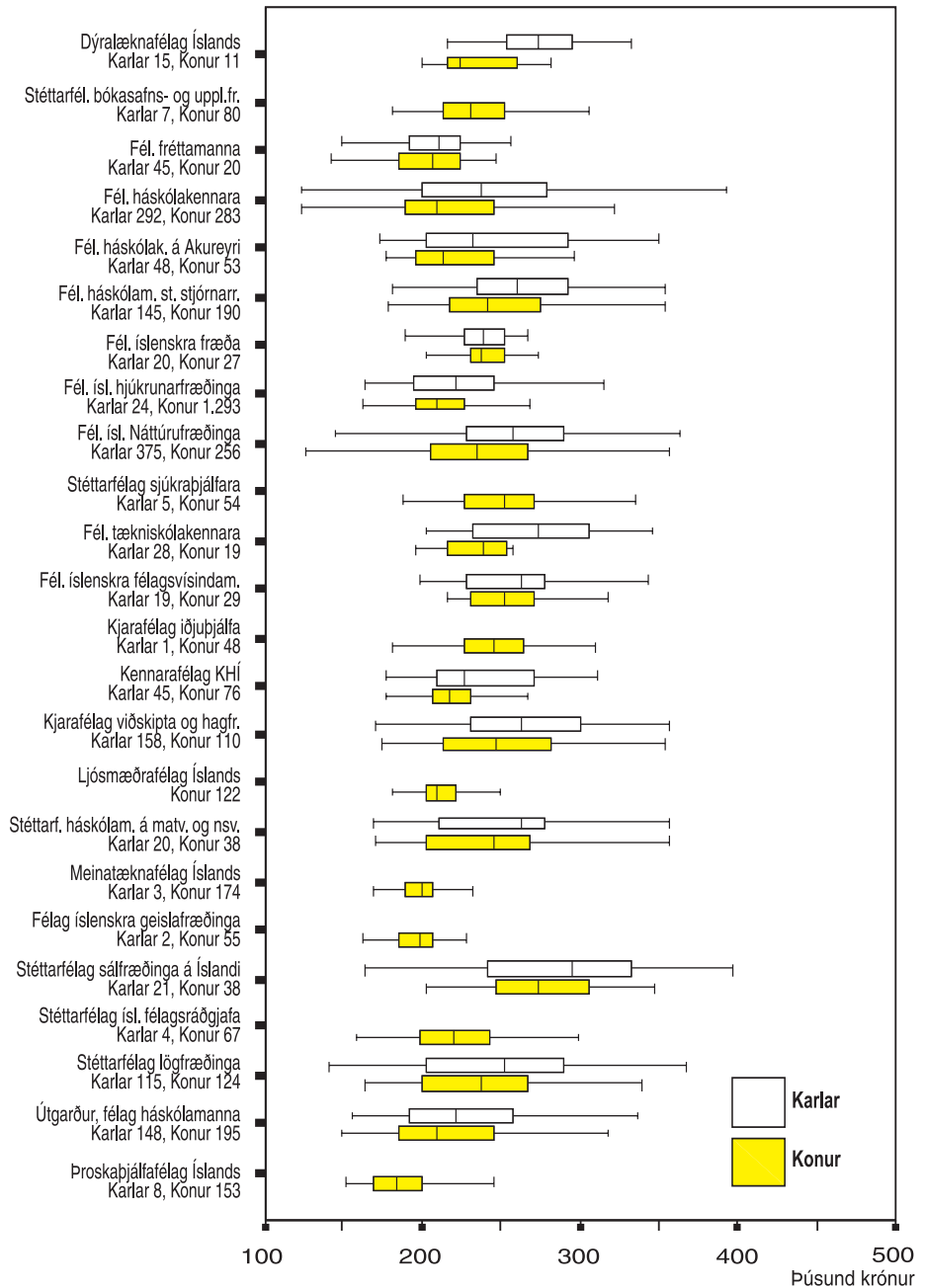
Mynd 2.3.1

*Dreifing dagvinnulauna í maí 2003  
BSRB ríkisstarfsmenn*



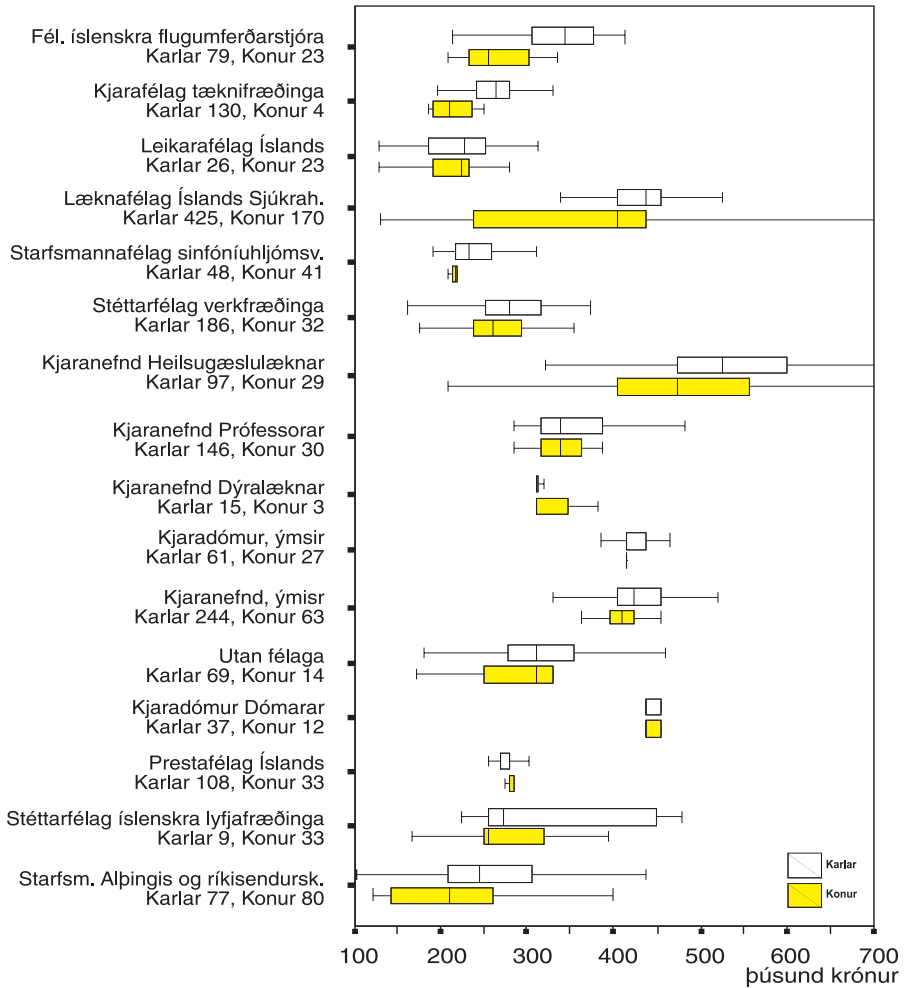
*Dreifing dagvinnulauna í maí 2003  
BHM ríkisstarfsmenn*

**Mynd 2.3.2**



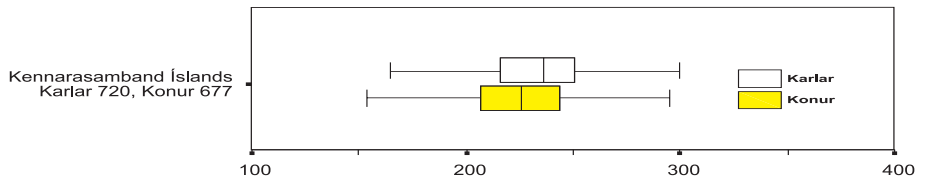
**Mynd 2.3.3**

*Dreifing dagvinnulauna í maí 2003  
ÝMSIR ríkisstarfsmenn*



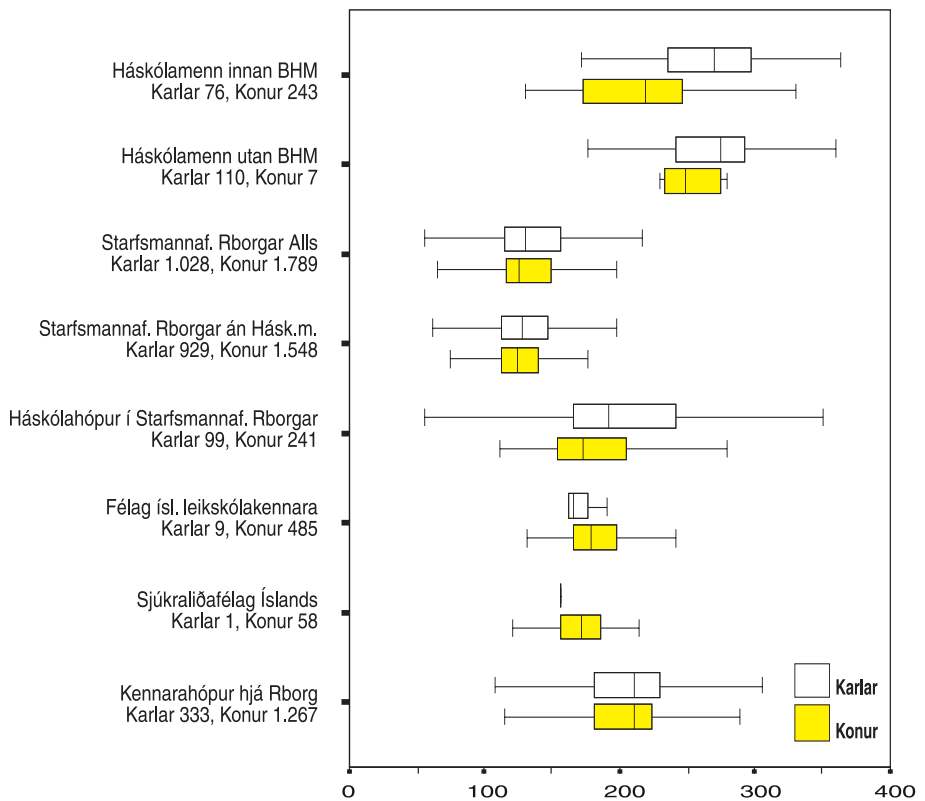
Mynd 2.3.4

*Dreifing dagvinnulauna í maí 2003  
Kennarasamband Íslands ríkisstarfsmenn*



Mynd 2.3.5

*Dreifing dagvinnulauna í maí 2003  
Starfsmenn Reykjavíkurborgar*



### 3. Meðaltal dagvinnulauna, yfirvinnulauna og annarra launa, ásamt heildarlaunum og kaupmætti dagvinnulauna, skipt eftir kyni

*Athuga ber að önnur laun fyrir apríl og desember eru heldur hærrí en aðra mánuði í eftirtöldum töflum því orlofsframlag, desemberuppbót og óregluleg önnur laun eru meðtalin.*

Ástæða er til að vekja sérstaka athygli á breyttum hlutföllum launategunda hjá mörgum stéttarfélögum, sem m.a. má rekja til nýja launakerfisins, sem tók gildi í kjölfar kjarasamninga á árabílinu 1997 - 2002. Dagvinnulaunahluti þeirra eykst en yfirvinnuhluti minnkar.

Jafnframt geta verið sveiflur í launum á milli mánaða hjá einstökum stéttarfélögum og/eða hópum vegna afturvirkra leiðréttinga á launum.

Hér á næstu síðum eru útreiknuð meðallaun eftir félögum, hópum og bandalögum ásamt kaupmætti dagvinnulauna.

*Kaupmáttur miðar við janúar 1987 = 100, nema annað sé tekið sérstaklega fram.*

Ekki eru birtar kynskiptar meðaltölur fyrir hópa sem hafa færri en 10 stöðugildi annaðhvort hjá körlum eða konum.

**Skýringar:**

MA = mánuður	DL = dagvinnulaun
YL = yfirvinnulaun	ÖL = önnur laun
HL = heildarlaun	Km.dl. = kaupmáttur dagvinnulauna
STG = stöðugildi	AR = Ár



## Félag flugmálastarfsmanna ríkisins

		<i>Karlar</i>					<i>Allir</i>						<i>Konur</i>				
MA	AR	STG	DL	YL	OL	HL	STG	DL	YL	OL	HL	Km.dl.	STG	DL	YL	OL	HL
7	2002	87,97	147.882	80.415	43.371	271.668	134,02	151.505	71.489	32.236	255.229	149,48	46,06	158.425	54.440	10.967	223.832
8	2002	83,72	149.183	94.480	44.831	288.494	129,26	152.509	83.445	33.763	269.718	151,29	45,53	158.625	63.155	13.414	235.194
9	2002	83,02	149.568	70.431	44.725	264.724	123,78	153.956	67.467	34.359	255.782	151,94	40,76	162.894	61.428	13.245	237.568
10	2002	78,58	151.427	89.169	44.192	284.788	117,74	155.563	80.038	34.112	269.714	152,73	39,16	163.864	61.714	13.883	239.462
11	2002	80,08	151.410	77.085	50.038	278.533	118,99	155.475	70.781	38.397	264.653	152,92	38,90	163.843	57.805	14.435	236.083
12	2002	81,78	152.652	76.139	83.231	312.022	120,64	156.391	69.981	75.322	301.694	153,71	38,86	164.259	57.023	58.678	279.959
1	2003	86,39	156.887	83.293	54.192	294.372	126,64	160.514	76.024	42.189	278.727	157,20	40,25	168.299	60.425	16.426	245.149
2	2003	83,36	156.828	82.680	48.488	287.996	124,22	160.450	77.409	38.171	276.030	157,40	40,86	167.839	66.656	17.124	251.620
3	2003	82,95	156.727	83.212	49.179	289.118	124,88	160.300	76.168	38.579	275.048	155,59	41,93	167.369	62.234	17.611	247.214
4	2003	85,73	156.074	90.068	56.272	302.413	128,20	159.378	81.480	46.860	287.718	154,51	42,47	166.047	64.146	27.862	258.055
5	2003	92,29	153.862	85.925	46.961	286.748	137,74	156.865	78.142	37.349	272.356	152,30	45,45	162.962	62.339	17.830	243.132
6	2003	104,43	148.564	84.245	39.034	271.843	158,24	150.973	79.233	30.659	260.865	146,49	53,81	155.649	69.506	14.408	239.562

## Félag starfsmanna stjórnarráðsins

		<i>Karlar</i>					<i>Allir</i>						<i>Konur</i>				
MA	AR	STG	DL	YL	ÖL	HL	STG	DL	YL	ÖL	HL	Km.dl.	STG	DL	YL	ÖL	HL
7	2002	68,72	165.212	90.637	15.637	271.486	306,18	162.212	39.394	4.451	206.056	141,43	237,46	161.344	24.564	1.213	187.121
8	2002	68,84	167.901	106.204	15.611	289.716	304,85	164.256	41.490	4.962	210.708	143,98	236,02	163.192	22.615	1.856	187.664
9	2002	64,62	168.458	116.084	14.118	298.660	277,84	166.728	47.266	3.799	217.793	145,40	213,23	166.204	26.412	672	193.288
10	2002	60,65	173.440	108.693	12.937	295.070	274,55	168.308	44.612	3.272	216.193	146,01	213,90	166.853	26.443	532	193.828
11	2002	59,01	173.318	105.118	13.295	291.731	276,15	167.860	43.324	3.301	214.486	145,89	217,14	166.377	26.529	585	193.492
12	2002	59,64	173.645	107.440	49.643	330.728	281,39	167.552	52.820	39.391	259.763	145,52	221,75	165.913	38.130	36.633	240.677
1	2003	60,19	173.795	111.078	19.028	303.900	278,95	172.282	46.920	4.575	223.777	149,09	218,76	171.866	29.268	598	201.732
2	2003	60,93	180.618	113.773	22.217	316.608	279,58	173.945	48.227	5.493	227.664	150,79	218,65	172.085	29.962	832	202.879
3	2003	63,81	179.173	105.232	25.022	309.428	283,00	173.608	47.837	6.203	227.648	148,90	219,19	171.987	31.129	725	203.841
4	2003	61,91	177.309	107.961	34.242	319.512	285,31	173.907	46.711	16.848	237.467	148,98	223,40	172.965	29.737	12.028	214.730
5	2003	63,06	176.346	119.678	24.298	320.322	292,19	172.135	47.908	7.195	227.238	147,68	229,13	170.977	28.155	2.487	201.619
6	2003	70,12	169.662	94.746	22.994	287.403	312,56	169.194	43.841	7.341	220.376	145,07	242,44	169.059	29.117	2.813	200.989

## BSRB, ríkisstarfsmenn

Landssamband lögreglumanna												
		Kerlar										
MA	AR	STG	DL	YL	ÖL	HL	ÖL	YL	HL	Km.dl.		
7	2002	734,36	187,251	92,531	49,913	329,695	815,31	183,613	89,975	49,529	323,116	153,19
8	2002	726,42	186,487	88,953	49,675	325,115	811,99	182,531	85,660	48,520	316,712	153,11
9	2002	670,93	192,828	85,930	56,146	334,903	742,02	189,215	83,324	55,503	328,042	157,90
10	2002	656,12	193,482	89,813	58,135	341,430	723,29	190,104	86,667	56,815	333,586	157,82
11	2002	647,84	193,189	95,699	64,119	353,007	716,46	189,673	92,033	62,635	344,341	157,74
12	2002	648,28	193,497	92,692	105,643	391,832	713,40	190,212	89,904	103,611	383,727	158,08
1	2003	620,55	204,784	107,329	71,799	383,912	672,89	202,612	104,352	70,405	377,370	167,79
2	2003	613,40	204,420	95,409	67,094	366,923	665,47	202,306	92,963	66,029	361,299	167,82
3	2003	616,36	204,680	96,609	60,682	361,971	668,15	202,592	94,331	59,802	356,725	166,27
4	2003	636,53	205,717	98,605	72,819	377,142	688,79	203,595	96,696	72,267	372,558	166,90
5	2003	644,45	199,519	109,827	65,476	374,822	710,91	196,427	105,725	63,369	365,521	161,27
6	2003	702,82	194,630	95,218	62,103	351,951	779,15	191,389	92,047	60,831	344,267	157,03

Sjúkraliðafélag Íslands												
		Kaupmátur miðast við 01/1992 = 100,00										
		Kerlar										
MA	AR	STG	DL	YL	ÖL	HL	ÖL	YL	HL	Km.dl.		
7	2002	21,84	147,051	37,116	36,233	220,400	500,54	149,408	34,915	25,396	209,719	164,26
8	2002	20,98	147,340	36,057	30,867	214,264	492,56	149,727	49,587	27,354	226,668	165,50
9	2002	20,90	148,233	43,998	47,408	239,638	479,04	151,435	39,598	35,252	226,285	166,52
10	2002	20,36	147,721	60,422	52,447	260,591	483,37	151,167	36,826	35,989	223,982	165,37
11	2002	20,41	147,807	58,977	46,659	253,443	488,19	151,255	43,212	36,552	231,019	165,76
12	2002	21,37	148,080	69,126	82,102	299,308	491,07	151,149	55,656	70,533	277,338	165,53
1	2003	21,14	152,688	62,795	51,119	266,603	499,92	155,818	52,150	37,468	245,437	170,03
2	2003	24,62	149,638	46,442	39,989	236,068	512,66	155,635	38,646	34,665	228,946	170,12
3	2003	22,66	150,262	47,620	50,697	248,579	512,74	155,728	43,224	38,563	237,515	168,42
4	2003	22,62	150,071	72,846	62,559	285,475	512,23	155,915	85,101	45,179	286,195	168,42
5	2003	24,37	148,221	58,970	48,343	255,535	524,15	155,395	63,502	36,167	255,064	168,11
6	2003	21,64	157,271	50,384	45,175	252,831	547,41	158,458	53,539	31,361	243,359	171,32

**Starfsmannafélag ríkisútvarpsins***Starfsmannafélag sjónvarpsins sameinast Starfsmannafélagi ríkisútvarpsins frá og með janúar 2002*

		<i>Karlar</i>						<i>Allir</i>						<i>Konur</i>				
MA	AR	STG	DL	YL	ÖL	HL	STG	DL	YL	ÖL	HL	Km.dl.	STG	DL	YL	ÖL	HL	
7	2002	49,05	148.239	39.603	10.254	198.096	117,50	139.802	38.460	6.190	184.451	123,94	68,45	133.755	37.640	3.277	174.672	
8	2002	46,89	151.360	52.838	8.407	212.605	110,06	142.556	44.296	5.848	192.700	127,07	63,17	136.022	37.957	3.948	177.927	
9	2002	48,04	152.699	55.554	13.746	221.998	104,16	146.050	49.327	8.507	203.883	129,51	56,12	140.358	43.995	4.022	188.375	
10	2002	50,01	156.058	69.519	13.372	238.948	105,95	149.981	58.815	8.327	217.123	132,31	55,94	144.549	49.248	3.818	197.614	
11	2002	49,25	155.813	79.557	15.164	250.534	105,64	149.312	64.148	8.915	222.376	131,96	56,39	143.635	50.691	3.458	197.783	
12	2002	50,57	156.769	59.323	45.756	261.849	107,40	149.930	49.060	42.568	241.558	132,41	56,83	143.845	39.929	39.731	223.505	
1	2003	47,77	163.025	91.327	15.227	269.580	104,57	155.378	73.180	9.507	238.065	136,73	56,80	148.945	57.917	4.697	211.560	
2	2003	45,65	166.032	84.550	15.159	265.741	102,68	156.446	68.114	9.303	233.863	137,91	57,03	148.772	54.957	4.615	208.344	
3	2003	45,52	165.556	74.252	12.368	252.175	101,48	156.525	56.098	7.766	220.388	136,51	55,96	149.179	41.330	4.022	194.531	
4	2003	46,62	164.878	73.710	23.519	262.107	103,45	156.453	58.159	18.167	232.779	136,29	56,83	149.543	45.403	13.777	208.723	
5	2003	50,91	160.069	90.083	10.638	260.789	111,53	154.325	73.669	6.444	234.438	134,64	60,62	149.501	59.884	2.921	212.307	
6	2003	53,33	157.417	57.762	9.994	225.172	120,96	152.103	52.840	6.536	211.479	132,61	67,63	147.912	48.960	3.809	200.681	

**Starfsmannafélag ríkisstofnana, tæknihópur**

		<i>Karlar</i>						<i>Allir</i>						<i>Konur</i>				
MA	AR	STG	DL	YL	ÖL	HL	STG	DL	YL	ÖL	HL	Km.dl.	STG	DL	YL	ÖL	HL	
7	2002	818,50	149.744	56.838	11.320	217.902	1.339,33	142.481	45.875	9.564	197.920	136,15	520,83	131.066	28.645	6.805	166.516	
8	2002	795,93	150.609	58.368	11.222	220.199	1.284,73	143.684	48.145	9.656	201.485	138,04	488,80	132.408	31.500	7.106	171.014	
9	2002	670,55	157.307	71.307	13.627	242.241	1.063,17	150.160	58.932	11.895	220.988	143,52	392,62	137.954	37.797	8.938	184.688	
10	2002	664,31	160.485	72.254	15.306	248.045	1.063,75	153.111	60.541	12.995	226.647	145,58	399,44	140.847	41.061	9.153	191.061	
11	2002	673,05	160.329	72.476	15.843	248.649	1.071,94	153.429	60.506	13.854	227.789	146,14	398,89	141.786	40.308	10.498	192.592	
12	2002	690,01	159.223	74.143	54.445	287.811	1.103,06	151.897	63.418	51.379	266.694	144,59	413,05	139.659	45.500	46.257	231.416	
1	2003	666,70	166.465	70.835	16.932	254.232	1.061,25	159.065	60.648	14.052	233.765	150,87	394,55	146.560	43.436	9.186	199.181	
2	2003	659,59	167.255	70.225	18.262	255.742	1.053,15	159.673	60.460	15.771	235.904	151,70	393,55	146.966	44.094	11.596	202.655	
3	2003	666,08	167.036	70.360	18.598	255.995	1.061,48	159.515	60.271	15.759	235.546	149,94	395,39	146.845	43.276	10.976	201.097	
4	2003	662,77	167.273	71.968	29.038	268.280	1.058,17	159.652	61.011	26.072	246.735	149,90	395,40	146.876	42.645	21.101	210.622	
5	2003	728,01	162.917	71.969	18.064	252.950	1.168,49	155.787	60.723	14.791	231.301	146,49	440,49	144.004	42.135	9.382	195.521	
6	2003	836,22	157.787	62.083	13.759	233.628	1.417,19	149.453	49.681	11.565	210.698	140,44	580,96	137.457	31.829	8.407	177.693	

## Starfsmannafélag ríkisstofnana, skrifstofuhópur

	AR	<i>Karlar</i>					<i>Allir</i>						<i>Konur</i>				
		STG	DL	YL	ÖL	HL	STG	DL	YL	ÖL	HL	Km.dl.	STG	DL	YL	ÖL	HL
7	2002	428,98	164.643	64.922	6.391	235.956	2.223,61	148.209	31.432	2.674	182.316	140,95	1.794,63	144.281	23.427	1.786	169.494
8	2002	423,92	165.582	61.593	6.714	233.889	2.153,87	149.315	30.705	2.687	182.707	142,77	1.729,96	145.329	23.136	1.700	170.165
9	2002	379,77	172.039	75.081	8.237	255.357	1.908,51	153.983	38.007	3.065	195.054	146,47	1.528,73	149.497	28.796	1.780	180.074
10	2002	378,35	175.498	76.831	7.419	259.749	1.918,42	158.174	37.315	3.042	198.531	149,68	1.540,07	153.917	27.607	1.967	183.491
11	2002	381,69	175.103	77.132	8.858	261.093	1.910,47	158.242	38.096	3.761	200.099	150,01	1.528,79	154.032	28.350	2.489	184.871
12	2002	385,77	176.017	72.677	43.415	292.109	1.914,60	158.992	37.237	40.139	236.368	150,62	1.528,83	154.696	28.295	39.312	222.303
1	2003	386,68	181.893	73.830	8.393	264.117	1.930,16	164.314	36.170	3.406	203.889	155,11	1.543,48	159.910	26.735	2.156	188.800
2	2003	395,18	182.970	74.449	10.159	267.578	1.964,63	164.856	37.722	3.973	206.550	155,88	1.569,45	160.295	28.474	2.416	191.184
3	2003	387,38	183.738	76.473	10.482	270.694	1.955,22	165.010	37.649	4.216	206.875	154,37	1.567,84	160.383	28.056	2.668	191.107
4	2003	389,26	183.758	73.268	18.887	275.914	1.974,12	164.852	38.266	13.697	216.815	154,04	1.584,86	160.208	29.669	12.422	202.300
5	2003	412,96	181.757	72.374	7.584	261.715	2.090,22	163.444	37.620	3.353	204.417	152,96	1.677,26	158.935	29.063	2.312	190.309
6	2003	460,72	175.120	63.618	7.555	246.293	2.288,05	160.168	34.557	3.361	198.085	149,80	1.827,33	156.398	27.229	2.303	185.931

## Starfsmannafélag ríkisstofnana, heilbrigðishópur

MA	AR	<i>Karlar</i>					<i>Allir</i>						<i>Konur</i>				
		STG	DL	YL	ÖL	HL	STG	DL	YL	ÖL	HL	Km.dl.	STG	DL	YL	ÖL	HL
7	2002	196,02	118.955	26.188	25.112	170.256	1.081,40	121.300	24.384	23.410	169.093	122,08	885,38	121.819	23.984	23.033	168.836
8	2002	201,63	119.088	28.259	27.148	174.495	1.077,15	121.433	24.771	23.256	169.459	122,88	875,52	121.973	23.967	22.360	168.300
9	2002	174,58	120.925	30.107	35.435	186.467	842,47	124.565	27.015	30.213	181.793	125,40	667,89	125.516	26.207	28.848	180.571
10	2002	173,89	124.930	27.968	36.077	188.976	841,92	128.097	26.850	31.304	186.250	128,29	668,03	128.921	26.558	30.061	185.541
11	2002	176,82	125.315	30.150	37.763	193.229	847,48	128.086	27.515	32.888	188.489	128,51	670,66	128.816	26.820	31.603	187.239
12	2002	185,84	124.577	28.595	67.721	220.893	871,10	127.840	26.552	67.640	222.032	128,17	685,26	128.725	25.998	67.618	222.341
1	2003	186,53	127.880	55.088	37.406	220.374	882,08	131.637	47.587	31.556	210.780	131,51	695,54	132.645	45.575	29.987	208.207
2	2003	182,61	128.129	27.667	40.913	196.708	876,53	131.780	25.419	34.225	191.424	131,87	693,93	132.741	24.828	32.465	190.034
3	2003	177,79	128.844	28.156	37.666	194.666	885,26	131.767	24.724	31.237	187.728	130,46	707,46	132.502	23.861	29.621	185.984
4	2003	184,56	128.439	29.335	47.979	205.753	916,09	132.906	28.592	42.353	203.851	131,43	731,53	134.033	28.404	40.934	203.371
5	2003	194,77	128.070	66.966	31.664	226.700	986,09	131.752	56.740	25.826	214.318	130,49	791,32	132.658	54.223	24.390	211.270
6	2003	225,01	128.284	37.023	29.814	195.121	1.156,11	130.893	35.643	26.737	193.274	129,56	931,10	131.523	35.310	25.994	192.827

## Starfsmannafélag ríkisstofnana, samtals

		<i>Karlar</i>						<i>Allir</i>						<i>Konur</i>				
MA	AR	STG	DL	YL	ÖL	HL	STG	DL	YL	ÖL	HL	Km.dl.	STG	DL	YL	ÖL	HL	
7	2002	1.443,50	149.991	55.078	11.728	216.797	4.644,34	140.292	33.956	9.489	183.737	135,39	3.200,84	135.918	24.430	8.480	168.827	
8	2002	1.421,48	150.603	55.059	12.137	217.799	4.515,75	141.062	34.251	9.576	184.889	136,87	3.094,28	136.679	24.692	8.400	169.771	
9	2002	1.224,90	156.689	66.605	15.064	238.358	3.814,15	146.420	41.412	11.523	199.354	141,34	2.589,24	141.561	29.493	9.848	180.902	
10	2002	1.216,55	160.072	67.347	15.822	243.242	3.824,09	150.144	41.472	12.033	203.648	144,18	2.607,54	145.511	29.399	10.265	185.176	
11	2002	1.231,56	159.881	67.842	16.825	244.549	3.829,89	150.222	42.027	13.031	205.280	144,51	2.598,34	145.644	29.791	11.233	186.668	
12	2002	1.261,62	159.255	66.985	53.028	279.268	3.888,76	150.001	42.270	49.488	241.759	144,20	2.627,14	145.558	30.401	47.787	223.746	
1	2003	1.239,91	165.472	69.400	17.349	252.221	3.873,48	155.434	45.476	12.733	213.643	148,89	2.633,57	150.709	34.213	10.559	195.481	
2	2003	1.237,38	166.500	65.293	19.017	250.810	3.894,31	156.009	41.102	13.973	211.084	149,70	2.656,94	151.124	29.835	11.623	192.583	
3	2003	1.231,26	166.776	66.189	18.798	251.763	3.901,95	155.973	40.870	13.487	210.330	148,07	2.670,69	150.993	29.198	11.038	191.229	
4	2003	1.236,60	166.667	66.015	28.670	261.351	3.948,38	156.046	42.117	23.662	221.826	147,97	2.711,78	151.203	31.220	21.379	203.802	
5	2003	1.335,74	163.660	71.365	16.807	251.832	4.244,80	153.974	48.421	11.722	214.117	146,22	2.909,07	149.526	37.886	9.388	196.800	
6	2003	1.521,95	158.672	58.843	14.255	231.769	4.861,35	150.082	39.224	11.312	200.618	142,44	3.339,40	146.167	30.283	9.971	186.421	

## Tollvarðafélag Íslands

		<i>Karlar</i>						<i>Allir</i>						<i>Konur</i>				
MA	AR	STG	DL	YL	ÖL	HL	STG	DL	YL	ÖL	HL	Km.dl.	STG	DL	YL	ÖL	HL	
7	2002	107,80	176.401	85.413	30.520	292.334	146,38	167.029	78.179	31.136	276.344	133,87	38,58	140.840	57.965	32.859	231.664	
8	2002	106,56	176.395	89.180	28.886	294.461	143,48	167.603	83.744	30.611	281.958	135,06	36,92	142.225	68.053	35.591	245.869	
9	2002	96,93	182.386	100.981	34.900	318.267	121,64	177.770	95.865	35.673	309.307	142,51	24,71	159.661	75.793	38.703	274.157	
10	2002	93,99	184.657	87.941	33.400	305.999	116,77	180.330	85.362	33.772	299.463	143,81	22,78	162.470	74.718	35.306	272.494	
11	2002	91,63	185.151	95.243	33.453	313.847	113,63	181.138	92.497	34.226	307.861	144,72	22,00	164.423	81.060	37.448	282.931	
12	2002	91,74	184.958	96.710	75.899	357.567	113,74	181.051	95.683	77.053	353.787	144,55	22,00	164.759	91.398	81.867	338.024	
1	2003	93,11	190.534	115.918	32.791	339.243	115,40	186.529	115.456	33.418	335.403	148,39	22,29	169.797	113.525	36.037	319.358	
2	2003	94,21	188.679	92.440	30.415	311.535	114,71	186.096	93.961	30.489	310.547	148,30	20,50	174.223	100.951	30.830	306.004	
3	2003	93,13	187.847	98.249	36.119	322.215	115,59	184.829	94.171	36.458	315.458	145,73	22,46	172.314	77.259	37.868	287.441	
4	2003	93,85	187.131	95.265	43.037	325.434	117,51	184.258	93.537	42.886	320.681	145,10	23,66	172.860	86.683	42.284	301.827	
5	2003	97,91	186.369	129.315	26.097	341.781	123,63	182.572	125.885	26.214	334.671	143,99	25,71	168.113	112.822	26.660	307.595	
6	2003	108,08	178.538	98.342	28.052	304.932	145,50	171.032	94.939	26.667	292.638	134,80	37,42	149.353	85.111	22.667	257.131	

## BSRB, ríkisstarfsmenn

		Kerlar						Konur								
MA	AR	STG	DL	YL	ÖL	HL	STG	DL	YL	ÖL	HL	STG	DL	YL	ÖL	HL
7	2002	2.514,36	162.264	68.764	25.093	256.122	6.674,14	148.143	42.925	16.209	207.277	4.159,78	139.607	27.306	10.840	177.753
8	2002	2.475,11	162.660	69.082	25.174	256.916	6.518,25	148.886	44.375	16.427	209.688	4.043,15	140.453	29.251	11.072	180.777
9	2002	2.209,34	168.701	75.119	29.774	273.594	5.670,38	154.341	48.902	19.854	223.097	3.461,03	145.174	32.167	13.521	190.863
10	2002	2.176,26	171.059	76.935	30.568	278.563	5.653,51	157.026	49.023	20.210	226.259	3.477,25	148.244	31.553	13.727	193.524
11	2002	2.179,78	170.690	78.803	32.947	282.440	5.656,70	156.951	50.535	21.739	229.224	3.476,92	148.337	32.812	14.713	195.861
12	2002	2.215,00	170.320	77.013	70.513	317.846	5.724,15	156.791	51.981	58.514	267.286	3.509,15	148.251	36.180	50.940	235.372
1	2003	2.169,06	177.505	84.376	35.386	297.268	5.679,61	162.703	55.684	22.348	240.734	3.510,54	153.556	37.966	14.291	205.803
2	2003	2.159,55	178.061	77.263	34.555	289.879	5.701,38	163.041	49.585	22.256	234.882	3.541,83	153.884	32.708	14.758	201.349
3	2003	2.155,68	178.305	78.058	33.075	289.438	5.715,55	163.034	49.759	21.708	234.502	3.559,85	153.787	32.623	14.825	201.235
4	2003	2.183,85	178.604	79.139	43.638	301.381	5.791,82	163.295	54.993	31.805	250.093	3.607,97	154.029	40.377	24.643	219.049
5	2003	2.308,73	174.346	86.742	32.393	293.481	6.153,57	160.584	59.201	20.314	240.099	3.844,84	152.321	42.655	13.061	208.036
6	2003	2.582,37	169.142	72.305	29.265	270.711	6.933,68	156.813	48.943	18.962	224.717	4.351,30	149.496	35.070	12.838	197.404

**Dýralæknafélag Íslands**

MA	AR	<i>Karlar</i>					HL	Km.dl.
		STG	DL	YL	ÖL	HL		
7	2002							
8	2002							
9	2002							
10	2002							
11	2002							
12	2002							
1	2003							
2	2003							
3	2003							
4	2003							
5	2003							
6	2003							

<i>Allir</i>						Km.dl.
STG	DL	YL	ÖL	HL	HL	
18,91	257.528	53.128	69.727	380.383	170,83	
20,61	253.531	67.964	76.441	397.936	169,09	
26,51	253.841	45.877	46.920	346.639	168,42	
22,86	251.531	54.435	49.751	355.716	166,02	
20,28	256.467	57.949	60.163	374.579	169,58	
22,49	251.022	52.570	77.227	380.819	165,87	
21,76	259.722	60.739	60.085	380.545	171,01	
21,78	260.199	65.566	60.714	386.479	171,61	
21,01	263.310	64.950	56.802	385.062	171,82	
21,99	263.045	59.514	64.171	386.730	171,45	
22,88	260.907	74.720	50.608	386.235	170,31	
22,33	262.265	60.370	65.645	388.281	171,08	

<i>Konur</i>				
STG	DL	YL	ÖL	HL

**Stéttarfélag bókasafns- og upplýsingafræðinga**

MA	AR	<i>Karlar</i>					HL	Km.dl.
		STG	DL	YL	ÖL	HL		
7	2002							
8	2002							
9	2002							
10	2002							
11	2002							
12	2002							
1	2003							
2	2003							
3	2003							
4	2003							
5	2003							
6	2003							

<i>Allir</i>						Km.dl.
STG	DL	YL	ÖL	HL	HL	
73,40	225.747	21.569	245	247.561	161,82	
74,81	226.722	20.967	398	248.087	163,40	
73,27	226.835	23.121	246	250.202	162,63	
73,25	226.885	26.117	246	253.248	161,83	
74,91	226.770	23.449	240	250.460	162,03	
77,60	226.288	28.405	34.916	289.609	161,58	
73,99	235.623	26.198	1.128	262.948	167,64	
74,44	235.983	27.742	3.124	266.850	168,18	
74,51	235.571	25.700	3.709	264.980	166,11	
75,59	237.161	28.760	10.702	276.623	167,03	
75,02	237.725	26.585	548	264.858	167,68	
78,22	237.366	25.745	295	263.407	167,32	

<i>Konur</i>				
STG	DL	YL	ÖL	HL

## BHM, ríkisstarfsmenn

### Félag fréttamanna

		Karlar					Allir					Konur					
MA	AR	STG	DL	YL	ÖL	HL	STG	DL	YL	ÖL	HL	Km.di.	STG	DL	YL	ÖL	HL
7	2002	53.99	197.379	77.767	19.886	295.032	70.74	198.152	73.232	20.729	292.113	142,07	16,76	200.641	58.623	23.445	282.710
8	2002	53.90	198.769	96.911	22.179	317.859	70.93	199.297	86.425	20.738	306.460	143,66	17,03	200.967	53.230	16.177	270.374
9	2002	45.07	207.585	81.326	30.040	318.951	59,07	207.170	74.981	29.202	311.353	148,57	14,00	205.834	54.553	26.503	286.890
10	2002	43.75	209.467	93.918	30.241	333.626	58,66	208.681	88.291	28.541	325.513	148,88	14,92	206.377	71.785	23.554	301.717
11	2002	44.97	208.545	100.753	27.408	336.706	61,08	208.112	91.612	28.177	327.901	148,74	16,12	206.905	66.109	30.322	303.335
12	2002	44.03	207.424	75.279	61.018	343.720	59,64	207.212	69.920	60.854	337.986	147,99	15,61	206.613	54.801	60.391	321.805
1	2003	43.97	211.422	127.542	28.383	367.348	59,88	212.311	120.598	31.127	364.036	151,09	15,91	214.766	61.409	38.708	354.883
2	2003	42.97	212.754	106.446	31.182	350.383	59,09	213.313	94.316	30.150	337.780	152,06	16,12	214.802	61.975	27.339	304.175
3	2003	41.48	214.729	112.321	25.470	352.519	57,60	214.749	102.724	26.299	343.772	151,46	16,12	214.802	78.023	28.432	321.257
4	2003	42.87	215.299	110.437	38.580	364.316	59,46	214.984	103.715	37.499	356.197	151,45	16,58	214.167	86.336	34.706	335.209
5	2003	43.56	208.694	185.547	20.538	414.779	61,31	209.183	185.636	20.721	415.541	147,58	17,75	210.384	185.856	21.170	417.409
6	2003	49.32	203.652	116.047	22.153	341.852	70,24	203.677	102.121	22.803	328.601	143,61	20,91	203.735	69.279	24.337	297.351

### Félag háskólakefnara

		Karlar					Allir					Konur					
MA	AR	STG	DL	YL	ÖL	HL	STG	DL	YL	ÖL	HL	Km.di.	STG	DL	YL	ÖL	HL
7	2002	248.73	232.554	40.526	7.025	280.105	490,52	222.629	36.354	6.098	265.081	123,24	241,79	212.419	32.063	5.144	249.626
8	2002	252.34	232.588	48.849	3.327	284.764	491,17	223.121	42.008	2.172	267.300	124,18	238,84	213.118	34.780	951	248.850
9	2002	246.26	235.769	75.267	3.347	314.384	483,33	226.096	61.942	2.708	290.746	125,19	237,08	216.049	48.100	2.044	266.193
10	2002	249.69	237.568	69.300	3.479	310.348	487,45	227.240	58.940	3.596	289.775	125,17	237,76	216.392	48.060	3.718	268.170
11	2002	244.32	236.885	74.795	3.110	314.789	485,81	226.400	61.710	2.960	291.070	124,93	241,49	215.793	48.472	2.808	267.073
12	2002	249.01	235.621	71.940	37.248	344.808	485,80	226.653	64.417	38.141	329.212	124,99	236,79	217.223	56.507	39.081	312.811
1	2003	250.09	242.246	76.986	3.711	322.943	502,19	231.813	61.568	2.456	295.837	127,38	252,10	221.464	46.273	1.211	268.947
2	2003	245.69	243.573	61.329	4.378	309.281	499,06	232.010	52.444	3.453	287.907	127,70	253,37	220.797	43.828	2.556	267.181
3	2003	246.90	243.218	65.400	2.914	311.532	504,86	231.930	54.719	2.321	288.970	126,30	257,96	221.126	44.497	1.754	267.376
4	2003	253.75	242.064	59.382	18.305	319.751	512,38	231.429	47.177	15.171	293.776	125,88	258,63	220.994	35.202	12.096	268.292
5	2003	252.53	242.197	52.184	7.430	301.811	507,50	231.998	48.160	6.269	286.428	126,38	254,97	221.897	44.175	5.120	271.192
6	2003	255.83	240.039	42.737	11.105	293.881	511,46	230.782	36.878	8.094	275.754	125,64	255,63	221.518	31.015	5.081	257.614



## Félag háskólakennara á Akureyri

Kaupmáttur miðast við 05/1992 = 100,00

		<b>Karlar</b>					<b>Allir</b>						<b>Konur</b>				
MA	AR	STG	DL	YL	ÖL	HL	STG	DL	YL	ÖL	HL	Km.dl.	STG	DL	YL	ÖL	HL
7	2002	39,04	243.379	66.272	0	309.651	77,24	230.472	46.632	0	277.104	171,87	38,20	217.282	26.563	0	243.845
8	2002	42,00	241.075	96.260	0	337.335	84,56	226.876	75.600	0	302.477	170,11	42,56	212.866	55.214	0	268.080
9	2002	43,18	240.836	77.376	0	318.211	85,64	228.618	64.413	0	293.031	170,53	42,46	216.193	51.230	0	267.423
10	2002	42,00	243.460	69.914	0	313.374	83,81	229.999	59.272	0	289.271	170,67	41,81	216.476	48.583	0	265.058
11	2002	42,00	243.492	89.892	1.178	334.562	84,32	229.963	66.930	821	297.714	170,95	42,32	216.535	44.141	468	261.144
12	2002	41,58	244.159	75.184	33.314	352.656	83,75	230.220	59.526	34.093	323.839	171,02	42,17	216.477	44.088	34.860	295.426
1	2003	42,91	250.860	89.012	0	339.872	89,44	235.833	63.913	0	299.747	174,57	46,53	221.975	40.765	0	262.741
2	2003	43,55	249.370	81.717	0	331.087	90,79	235.982	60.238	79	296.299	174,98	47,24	223.638	40.436	152	264.225
3	2003	44,51	247.729	73.293	0	321.021	92,95	234.943	59.933	38	294.914	172,36	48,43	223.192	47.655	72	270.919
4	2003	44,48	247.793	99.172	9.989	356.954	92,84	235.019	67.122	9.435	311.576	172,21	48,36	223.269	37.640	8.925	269.834
5	2003	44,35	247.168	133.361	5.514	386.043	93,29	234.324	106.421	2.675	343.420	171,96	48,94	222.686	82.012	103	304.801
6	2003	43,63	248.637	81.296	2.431	332.365	91,01	235.261	68.415	2.872	306.548	172,54	47,38	222.944	56.552	3.278	282.774

## Fél. háskólamenntaðra starfsmanna stjórnarráðs

		<b>Karlar</b>					<b>Allir</b>						<b>Konur</b>				
MA	AR	STG	DL	YL	ÖL	HL	STG	DL	YL	ÖL	HL	Km.dl.	STG	DL	YL	ÖL	HL
7	2002	139,76	249.824	57.814	9.874	317.513	304,15	240.622	57.805	6.434	304.860	149,61	164,39	232.798	57.796	3.509	294.103
8	2002	144,37	251.321	57.979	9.686	318.986	312,46	241.390	54.738	5.972	302.100	150,90	168,09	232.860	51.954	2.782	287.596
9	2002	142,87	250.341	61.679	9.784	321.804	312,01	241.156	56.899	6.085	304.139	149,98	169,13	233.396	52.861	2.960	289.218
10	2002	142,31	250.865	61.229	11.409	323.504	314,43	242.655	56.559	6.939	306.152	150,13	172,12	235.866	52.697	3.243	291.807
11	2002	141,27	252.366	59.609	14.693	326.667	315,89	244.146	55.429	8.976	308.552	151,32	174,62	237.497	52.048	4.352	293.897
12	2002	140,51	251.565	66.314	50.269	368.148	312,70	244.075	60.873	44.735	349.683	151,17	172,19	237.964	56.433	40.219	334.616
1	2003	140,76	262.084	61.150	10.545	333.778	315,58	254.762	57.549	6.318	318.629	157,23	174,82	248.867	54.650	2.914	306.431
2	2003	137,18	262.469	64.914	13.146	340.529	312,78	255.327	60.160	7.365	322.852	157,84	175,61	249.748	56.446	2.849	309.043
3	2003	134,81	262.337	63.803	15.249	341.389	312,03	254.965	60.322	8.263	323.550	155,95	177,22	249.357	57.674	2.949	309.981
4	2003	136,24	263.019	58.616	26.775	348.410	315,81	254.705	55.654	18.954	329.313	155,61	179,57	248.398	53.407	13.019	314.824
5	2003	140,23	263.138	59.794	15.022	337.954	324,27	254.185	56.996	8.256	319.436	155,52	184,04	247.364	54.864	3.100	305.327
6	2003	142,86	263.550	62.016	13.328	338.894	327,22	254.284	57.943	7.874	320.101	155,48	184,36	247.104	54.786	3.648	305.539

## Félag íslenskra fræða

		<i>Karlar</i>						<i>Allir</i>						<i>Konur</i>					
MA	AR	STG	DL	YL	ÖL	HL	STG	DL	YL	ÖL	HL	Km.dl.	STG	DL	YL	ÖL	HL		
7	2002	20,70	222.327	32.246	472	255.046	44,84	222.769	23.250	325	246.343	134,50	24,14	223.147	15.538	198	238.883		
8	2002	19,98	225.561	16.776	489	242.827	43,92	223.811	13.208	223	237.242	135,86	23,94	222.350	10.230	0	232.580		
9	2002	19,93	226.547	38.601	490	265.639	44,55	225.989	25.180	219	251.388	136,47	24,62	225.537	14.316	0	239.853		
10	2002	17,95	225.903	16.820	544	243.267	43,80	223.721	12.888	223	236.833	134,40	25,85	222.206	10.157	0	232.363		
11	2002	17,61	227.681	21.484	555	249.720	44,08	225.023	21.240	222	246.485	135,43	26,47	223.255	21.077	0	244.332		
12	2002	18,11	228.119	35.708	38.798	302.625	46,04	224.127	22.029	33.283	279.439	134,80	27,94	221.540	13.165	29.709	264.413		
1	2003	19,37	233.490	45.411	520	279.420	46,32	233.402	33.652	217	267.271	139,87	26,95	233.340	25.199	0	258.539		
2	2003	19,80	231.042	6.165	508	237.715	45,88	233.338	10.771	219	244.328	140,07	26,08	235.081	14.267	0	249.348		
3	2003	20,15	235.486	22.842	500	258.827	47,83	235.352	19.771	210	255.333	139,78	27,68	235.254	17.535	0	252.789		
4	2003	19,97	236.689	22.186	10.113	268.989	44,37	236.376	21.611	10.257	268.244	140,23	24,40	236.119	21.141	10.376	267.635		
5	2003	20,61	234.043	28.504	1.557	264.104	46,65	236.924	26.590	688	264.202	140,76	26,04	239.205	25.075	0	264.280		
6	2003	21,28	234.211	19.923	473	254.607	48,77	236.050	17.443	206	253.699	140,15	27,49	237.474	15.523	0	252.996		

## Félag íslenskra hjúkrunarfræðinga

		<i>Karlar</i>						<i>Allir</i>						<i>Konur</i>					
MA	AR	STG	DL	YL	ÖL	HL	STG	DL	YL	ÖL	HL	Km.dl.	STG	DL	YL	ÖL	HL		
7	2002	22,25	215.863	90.205	32.995	339.063	1.059,27	207.542	63.631	26.508	297.682	148,73	1.037,02	207.364	63.061	26.369	296.794		
8	2002	23,78	212.300	113.377	40.028	365.705	1.042,35	208.105	67.994	30.015	306.113	149,95	1.018,57	208.007	66.934	29.781	304.722		
9	2002	25,00	213.481	79.350	35.127	327.958	1.055,60	207.738	61.627	33.538	302.903	148,91	1.030,60	207.598	61.197	33.499	302.295		
10	2002	22,41	216.220	101.354	39.948	357.521	1.055,18	207.851	65.423	34.766	308.040	148,22	1.032,77	207.669	64.643	34.654	306.966		
11	2002	25,17	214.715	88.700	46.266	349.681	1.068,88	208.327	66.048	34.785	309.160	148,82	1.043,71	208.173	65.501	34.508	308.182		
12	2002	24,40	214.849	86.619	81.413	382.882	1.062,55	209.171	77.710	72.220	359.101	149,32	1.038,15	209.038	77.501	72.004	358.543		
1	2003	24,16	224.931	85.755	47.684	358.370	1.065,64	216.291	72.753	37.372	326.416	153,86	1.041,48	216.090	72.451	37.133	325.674		
2	2003	24,99	225.316	87.471	44.490	357.277	1.075,74	216.663	63.236	33.387	313.286	154,38	1.050,75	216.458	62.660	33.122	312.240		
3	2003	24,99	225.306	96.715	49.701	371.723	1.080,13	216.854	70.814	37.282	324.951	152,88	1.055,14	216.654	70.201	36.988	323.843		
4	2003	24,65	225.841	112.803	64.612	403.256	1.086,26	218.031	101.469	45.325	364.825	153,53	1.061,61	217.849	101.206	44.877	363.932		
5	2003	23,45	226.094	122.018	40.512	388.623	1.076,73	218.281	87.156	36.521	341.958	153,93	1.053,28	218.107	86.380	36.432	340.919		
6	2003	23,15	226.619	96.529	39.899	363.047	1.108,75	217.757	78.007	32.648	328.413	153,47	1.085,60	217.568	77.612	32.494	327.674		

## Félag íslenskra náttúrufræðinga

MA	AR	<i>Karlar</i>					<i>Allir</i>						<i>Konur</i>				
		STG	DL	YL	ÖL	HL	STG	DL	YL	ÖL	HL	Km.dl.	STG	DL	YL	ÖL	HL
7	2002	362,90	246.850	57.196	5.380	309.425	604,54	237.345	46.540	5.717	289.601	154,02	241,64	223.070	30.537	6.222	259.829
8	2002	360,63	247.745	56.239	7.359	311.342	593,98	238.270	48.320	7.539	294.129	155,46	233,35	223.628	36.083	7.817	267.528
9	2002	346,04	250.740	55.120	5.066	310.926	559,32	242.873	47.144	5.276	295.292	157,65	213,27	230.108	34.203	5.615	269.927
10	2002	347,50	251.107	56.574	5.426	313.108	563,64	243.504	46.144	5.578	295.225	157,24	216,14	231.279	29.374	5.821	266.474
11	2002	344,12	251.185	48.781	5.815	305.781	561,06	244.064	43.862	5.772	293.699	157,88	216,94	232.769	36.059	5.704	274.532
12	2002	356,12	252.554	59.805	42.709	355.068	580,82	244.940	53.598	43.595	342.133	158,34	224,70	232.873	43.762	44.998	321.633
1	2003	350,04	261.027	31.803	4.041	296.871	573,15	253.919	28.436	4.177	286.531	163,56	223,11	242.767	23.153	4.389	270.309
2	2003	351,62	262.522	39.517	16.135	318.173	583,57	253.881	33.621	14.133	301.635	163,81	231,96	240.782	24.684	11.099	276.565
3	2003	353,10	262.409	53.747	24.525	340.681	582,36	254.168	47.343	20.081	321.592	162,26	229,27	241.476	37.479	13.236	292.192
4	2003	354,31	263.083	59.537	16.599	339.220	585,96	254.290	50.492	16.431	321.213	162,14	231,64	240.841	36.657	16.173	293.671
5	2003	364,36	261.441	60.108	5.683	327.232	602,31	252.978	52.732	5.891	311.601	161,55	237,95	240.017	41.437	6.211	287.665
6	2003	371,20	259.678	56.403	6.507	322.587	620,24	250.155	47.099	6.075	303.329	159,65	249,04	235.960	33.231	5.432	274.623

## Stéttarfélag sjúkráþjálfra

MA	AR	<i>Karlar</i>					<i>Allir</i>						<i>Konur</i>				
		STG	DL	YL	ÖL	HL	STG	DL	YL	ÖL	HL	Km.dl.	STG	DL	YL	ÖL	HL
7	2002						56,15	209.069	36.414	5.933	251.415	128,31					
8	2002						52,68	212.120	41.460	7.509	261.090	130,89					
9	2002						47,50	215.238	42.411	8.676	266.325	132,13					
10	2002						47,80	238.597	26.668	7.609	272.874	145,71					
11	2002						48,10	238.486	25.628	6.900	271.013	145,90					
12	2002						48,65	239.992	26.022	47.064	313.078	146,72					
1	2003						50,11	245.719	25.539	7.003	278.261	149,69					
2	2003						49,73	245.245	25.278	7.336	277.859	149,65					
3	2003						48,86	247.296	27.836	7.832	282.965	149,31					
4	2003						50,93	249.375	29.488	18.079	296.942	150,38					
5	2003						50,10	250.240	28.431	9.018	287.690	151,13					
6	2003						52,60	249.343	20.821	5.981	276.144	150,49					

## Félag tækniskólakennara

MA	AR	Karlar					ÖL	HL
		STG	DL	YL	ÖL	HL		
7	2002	26,04	260.991	22.136		0	283.126	
8	2002	27,50	259.840	18.004		0	277.844	
9	2002	28,13	258.465	116.069		0	374.534	
10	2002	27,23	260.556	141.943		0	402.499	
11	2002	28,51	257.743	155.369		0	413.112	
12	2002	28,52	259.236	172.417	36.314	467.967		
1	2003	29,23	268.028	110.114		-24	378.118	
2	2003	28,49	266.206	92.733		0	358.939	
3	2003	27,43	265.455	79.130		0	344.585	
4	2003	28,10	267.907	69.690	9.697	347.294		
5	2003	28,43	269.071	93.465	717	363.253		
6	2003	27,35	272.291	-274		0	272.017	

## Félag íslenskra. félagsvísindamanna

MA	AR	Karlar					ÖL	HL
		STG	DL	YL	ÖL	HL		
7	2002	14,80	240.483	41.810	7.018	289.311		
8	2002	14,80	240.483	42.858	7.018	290.359		
9	2002	15,80	232.435	40.189	6.573	279.197		
10	2002	15,50	239.645	45.140	6.701	291.486		
11	2002	15,69	239.233	38.803	6.619	284.656		
12	2002	16,59	241.603	52.451	43.921	337.976		
1	2003	16,80	251.789	44.099	6.368	302.255		
2	2003	16,80	249.863	67.391	6.368	323.622		
3	2003	18,92	256.065	56.357	5.975	318.396		
4	2003	19,00	256.628	55.953	14.943	327.525		
5	2003	19,11	257.336	55.099	5.599	318.033		
6	2003	18,63	259.387	55.782	5.742	320.911		

Allir						
STG	DL	YL	ÖL	HL	Km.dl.	
45,60	251.035	28.277	0	279.312	170,01	
47,22	250.164	19.126	0	269.290	170,34	
47,41	248.891	96.153	0	345.044	168,60	
46,90	249.450	107.593	0	357.042	168,10	
48,18	248.080	122.698	0	370.779	167,47	
48,75	250.474	124.439	35.347	410.260	168,97	
52,41	258.285	96.559	-13	354.831	173,62	
48,65	259.991	82.314	0	342.305	175,07	
46,45	258.199	77.087	0	335.286	172,02	
47,12	260.673	69.498	9.900	340.071	173,46	
47,45	261.420	104.833	629	366.882	174,22	
47,15	262.726	8.694	0	271.420	174,98	

Allir						
STG	DL	YL	ÖL	HL	Km.dl.	
42,33	237.237	38.958	9.081	285.276	161,47	
41,41	237.528	50.469	6.936	294.933	162,54	
42,55	238.324	39.763	8.498	286.586	162,25	
44,44	243.116	42.383	10.055	295.554	164,65	
45,48	241.868	46.863	9.074	297.805	164,10	
47,87	244.109	52.528	41.868	338.505	165,51	
47,78	250.837	39.119	9.833	299.790	169,46	
47,46	250.286	50.139	8.726	309.150	169,37	
47,50	254.626	49.469	9.082	313.176	170,48	
46,82	256.067	49.502	17.892	323.460	171,25	
47,13	256.378	47.580	11.582	315.541	171,71	
46,78	255.940	51.818	8.434	316.193	171,31	

Konur					
STG	DL	YL	ÖL	HL	
19,56	237.781	36.452	0	274.233	
19,72	236.671	20.690	0	257.361	
19,28	234.923	67.095	0	302.018	
19,67	234.075	60.040	0	294.115	
19,67	234.075	75.345	0	309.421	
20,23	238.120	56.800	33.984	328.904	
23,18	245.999	79.466	0	325.465	
20,16	251.207	67.590	0	318.797	
19,02	247.734	74.140	0	321.874	
19,02	249.985	69.215	10.200	329.400	
19,02	249.985	121.823	498	372.306	
19,80	249.514	21.082	0	270.596	

# BHM, ríkisstarfsmenn

Oktober 2003

## Kjarafélag iðjubjálfa

		Kjarlar						Konur								
MA	AR	STG	DL	YL	ÖL	HL	STG	DL	YL	ÖL	HL	STG	DL	YL	ÖL	HL
7	2002	40,56	215.132	37.374	0	252.506	40,56	215.132	37.374	0	252.506	40,56	215.132	37.374	0	252.506
8	2002	42,45	216.716	34.430	0	251.146	42,45	216.716	34.430	0	251.146	42,45	216.716	34.430	0	251.146
9	2002	41,52	221.483	37.984	0	259.467	41,52	221.483	37.984	0	259.467	41,52	221.483	37.984	0	259.467
10	2002	42,45	220.311	35.478	455	256.244	42,45	220.311	35.478	455	256.244	42,45	220.311	35.478	455	256.244
11	2002	42,54	220.562	48.841	476	269.879	42,54	220.562	48.841	476	269.879	42,54	220.562	48.841	476	269.879
12	2002	43,32	221.724	27.179	45.623	294.526	43,32	221.724	27.179	45.623	294.526	43,32	221.724	27.179	45.623	294.526
1	2003	40,22	256.009	14.144	171	270.324	40,22	256.009	14.144	171	270.324	40,22	256.009	14.144	171	270.324
2	2003	38,65	259.732	14.933	187	274.852	38,65	259.732	14.933	187	274.852	38,65	259.732	14.933	187	274.852
3	2003	38,65	259.732	17.882	178	277.793	38,65	259.732	17.882	178	277.793	38,65	259.732	17.882	178	277.793
4	2003	38,65	260.444	16.346	10.640	287.429	38,65	260.444	16.346	10.640	287.429	38,65	260.444	16.346	10.640	287.429
5	2003	41,21	257.489	16.326	133	273.948	41,21	257.489	16.326	133	273.948	41,21	257.489	16.326	133	273.948
6	2003	45,18	253.743	12.043	2.850	268.636	45,18	253.743	12.043	2.850	268.636	45,18	253.743	12.043	2.850	268.636

## Kennarafélag KHÍ

		Kjarlar						Konur								
MA	AR	STG	DL	YL	ÖL	HL	STG	DL	YL	ÖL	HL	STG	DL	YL	ÖL	HL
7	2002	40,43	229.865	123.053	0	352.918	40,43	229.865	123.053	0	352.918	40,43	229.865	123.053	0	352.918
8	2002	55,16	218.563	91.118	33	309.714	55,16	218.563	91.118	33	309.714	55,16	218.563	91.118	33	309.714
9	2002	46,24	228.694	96.246	92	325.032	46,24	228.694	96.246	92	325.032	46,24	228.694	96.246	92	325.032
10	2002	44,24	230.700	102.465	96	333.262	44,24	230.700	102.465	96	333.262	44,24	230.700	102.465	96	333.262
11	2002	43,74	230.983	104.670	97	335.750	43,74	230.983	104.670	97	335.750	43,74	230.983	104.670	97	335.750
12	2002	42,41	231.123	94.144	35.184	360.451	42,41	231.123	94.144	35.184	360.451	42,41	231.123	94.144	35.184	360.451
1	2003	43,23	238.215	108.318	66	346.599	43,23	238.215	108.318	66	346.599	43,23	238.215	108.318	66	346.599
2	2003	42,78	238.746	106.439	118	345.302	42,78	238.746	106.439	118	345.302	42,78	238.746	106.439	118	345.302
3	2003	40,78	238.799	109.004	3.132	350.934	40,78	238.799	109.004	3.132	350.934	40,78	238.799	109.004	3.132	350.934
4	2003	42,31	238.517	110.900	10.045	359.462	42,31	238.517	110.900	10.045	359.462	42,31	238.517	110.900	10.045	359.462
5	2003	43,06	238.999	126.200	789	365.987	43,06	238.999	126.200	789	365.987	43,06	238.999	126.200	789	365.987
6	2003	42,14	239.050	145.110	2.394	386.554	42,14	239.050	145.110	2.394	386.554	42,14	239.050	145.110	2.394	386.554

**Kjarafélag viðskipta- og hagfræðinga**

MA	AR	<i>Karlar</i>					<i>Allir</i>						<i>Konur</i>				
		STG	DL	YL	ÖL	HL	STG	DL	YL	ÖL	HL	Km.dl.	STG	DL	YL	ÖL	HL
7	2002	143,06	251.524	80.939	301	332.765	239,62	246.627	81.944	279	328.850	147,11	96,56	239.372	83.432	245	323.050
8	2002	143,46	251.910	73.031	279	325.220	240,99	247.146	76.498	355	323.999	148,22	97,53	240.138	81.598	466	322.203
9	2002	141,45	253.153	87.425	283	340.860	242,64	247.897	84.620	247	332.765	147,90	101,19	240.551	80.700	198	321.449
10	2002	143,77	255.765	96.551	408	352.724	250,13	249.521	92.306	314	342.142	148,10	106,36	241.081	86.568	188	327.837
11	2002	143,83	255.180	92.411	278	347.869	249,34	249.177	86.998	314	336.489	148,16	105,51	240.993	79.619	363	320.975
12	2002	146,74	256.222	85.626	41.604	383.453	254,07	249.469	82.575	37.844	369.888	148,23	107,33	240.235	78.404	32.703	351.343
1	2003	146,28	263.728	89.043	540	353.311	250,41	258.114	89.277	414	347.805	152,82	104,13	250.226	89.605	238	340.069
2	2003	149,76	264.450	96.592	1.018	362.059	253,03	258.683	94.634	681	353.999	153,42	103,27	250.322	91.796	194	342.311
3	2003	153,02	265.039	91.037	697	356.773	257,49	260.036	90.023	540	350.599	152,59	104,47	252.708	88.537	310	341.555
4	2003	153,58	266.517	88.705	10.730	365.952	256,84	261.210	89.221	10.559	360.989	153,10	103,26	253.316	89.988	10.304	353.608
5	2003	157,07	267.335	85.609	1.438	354.382	263,20	262.065	86.314	1.398	349.777	153,83	106,13	254.266	87.357	1.340	342.963
6	2003	155,96	266.721	89.129	1.508	357.358	259,74	261.656	89.843	1.249	352.749	153,49	103,78	254.045	90.918	860	345.823

**Ljósmeðrafélag Íslands** *Kaupmáttur miðast við 01/2000 = 100,00*

MA	AR	<i>Karlar</i>					<i>Allir</i>						<i>Konur</i>				
		STG	DL	YL	ÖL	HL	STG	DL	YL	ÖL	HL	Km.dl.	STG	DL	YL	ÖL	HL
7	2002						87,48	205.933	45.204	39.353	290.490	106,31	87,48	205.933	45.204	39.353	290.490
8	2002						91,85	205.785	50.790	37.052	293.628	106,81	91,85	205.785	50.790	37.052	293.628
9	2002						86,78	206.002	39.094	43.974	289.070	106,37	86,78	206.002	39.094	43.974	289.070
10	2002						86,91	206.808	40.019	45.041	291.869	106,24	86,91	206.808	40.019	45.041	291.869
11	2002						84,44	207.774	40.742	47.916	296.432	106,92	84,44	207.774	40.742	47.916	296.432
12	2002						85,85	208.630	64.315	85.985	358.930	107,29	85,85	208.630	64.315	85.985	358.930
1	2003						85,57	215.418	47.821	47.430	310.669	110,39	85,57	215.418	47.821	47.430	310.669
2	2003						87,91	215.833	39.175	43.829	298.838	110,79	87,91	215.833	39.175	43.829	298.838
3	2003						86,58	216.297	40.233	48.986	305.516	109,85	86,58	216.297	40.233	48.986	305.516
4	2003						86,88	216.754	98.519	52.418	367.691	109,95	86,88	216.754	98.519	52.418	367.691
5	2003						88,15	217.029	60.208	47.255	324.492	110,25	88,15	217.029	60.208	47.255	324.492
6	2003						89,60	216.679	52.665	39.635	308.979	110,01					

## Stéttarfélag háskólanna á matvæla- og næringarviði

		<i>Karlar</i>					<i>Allir</i>						<i>Konur</i>				
MA	AR	STG	DL	YL	ÖL	HL	STG	DL	YL	ÖL	HL	Km.dl.	STG	DL	YL	ÖL	HL
7	2002	20,44	234.343	47.761	3.538	285.642	57,30	223.764	33.956	3.386	261.106	166,76	36,85	217.896	26.298	3.301	247.495
8	2002	21,67	236.781	47.767	5.621	290.168	57,22	226.652	36.300	5.432	268.384	169,83	35,55	220.476	29.309	5.317	255.101
9	2002	21,66	239.454	47.350	7.671	294.475	54,49	229.913	37.495	5.554	272.961	171,38	32,83	223.617	30.991	4.156	258.764
10	2002	21,66	239.453	53.331	6.758	299.542	56,27	229.523	37.781	3.784	271.087	170,20	34,61	223.307	28.048	1.922	253.278
11	2002	21,67	239.449	49.956	4.944	294.349	55,22	230.282	35.914	3.135	269.331	171,07	33,54	224.359	26.840	1.965	253.164
12	2002	21,95	239.643	70.396	47.684	357.724	55,61	231.268	44.332	46.941	322.541	171,69	33,65	225.803	27.328	46.456	299.588
1	2003	20,56	257.819	51.374	5.085	314.278	54,86	253.185	33.440	3.411	290.036	187,29	34,30	250.408	22.691	2.408	275.507
2	2003	20,06	256.687	39.496	5.212	301.395	54,24	252.799	28.730	3.148	284.677	187,32	34,18	250.518	22.412	1.936	274.867
3	2003	20,45	260.740	46.217	5.112	312.069	54,20	254.684	32.318	3.087	290.089	186,71	33,75	251.014	23.898	1.861	276.773
4	2003	18,67	260.941	40.476	16.403	317.819	51,61	254.617	30.247	14.189	299.053	186,45	32,94	251.034	24.450	12.934	288.418
5	2003	19,56	261.164	37.958	5.345	304.467	52,58	255.029	27.790	4.437	287.256	187,03	33,02	251.396	21.768	3.899	277.063
6	2003	19,56	261.164	34.011	3.975	299.151	52,65	254.264	30.749	2.583	287.596	186,35	33,10	250.187	28.821	1.761	280.768

Meinataeknafélag Íslands *Kaupmáttur miðast við 04/1989 = 100,00*

		<i>Karlar</i>					<i>Allir</i>						<i>Konur</i>				
MA	AR	STG	DL	YL	ÖL	HL	STG	DL	YL	ÖL	HL	Km.dl.	STG	DL	YL	ÖL	HL
7	2002						157,00	194.466	75.266	23.677	293.410	153,91					
8	2002						157,23	194.541	79.502	24.311	298.354	154,80					
9	2002						157,39	194.869	80.282	23.282	298.433	154,26					
10	2002						154,85	194.568	83.897	25.326	303.791	153,22					
11	2002						154,79	194.788	82.530	24.049	301.367	153,67					
12	2002						153,91	195.026	85.185	63.987	344.198	153,75					
1	2003						154,22	200.664	83.768	25.878	310.310	157,64					
2	2003						157,51	200.511	73.700	21.894	296.105	157,78					
3	2003						155,52	201.088	83.978	24.732	309.798	156,56					
4	2003						155,17	201.210	89.390	37.174	327.774	156,47					
5	2003						157,38	201.193	88.624	24.668	314.485	156,69					
6	2003						156,16	200.832	86.147	26.563	313.542	156,31					

## Félag íslenskra geislafræðinga

Kaupmáttur miðast við 01/1992 = 100,00

		<i>Karlar</i>					<i>Allir</i>					<i>Konur</i>					
MA	AR	STG	DL	YL	ÖL	HL	STG	DL	YL	ÖL	HL	Km.dl.	STG	DL	YL	ÖL	HL
7	2002						45,40	186.955	77.767	18.471	283.193	174,13					
8	2002						46,17	185.933	83.082	18.497	287.512	174,12					
9	2002						46,75	185.292	78.173	18.357	281.821	172,62					
10	2002						47,20	188.655	69.842	17.697	276.194	174,85					
11	2002						47,55	188.688	69.603	16.793	275.084	175,19					
12	2002						46,46	188.964	77.859	54.606	321.430	175,33					
1	2003						47,80	196.134	79.043	20.846	296.024	181,33					
2	2003						49,40	197.436	67.149	15.606	280.191	182,84					
3	2003						48,90	197.618	71.773	18.090	287.481	181,07					
4	2003						48,84	197.568	81.615	28.894	308.078	180,81					
5	2003						50,29	198.293	82.287	15.927	296.508	181,75					
6	2003						49,05	197.673	86.322	16.312	300.307	181,06					

## Stéttarfélag sálfræðinga á Íslandi

		<i>Karlar</i>					<i>Allir</i>					<i>Konur</i>					
MA	AR	STG	DL	YL	ÖL	HL	STG	DL	YL	ÖL	HL	Km.dl.	STG	DL	YL	ÖL	HL
7	2002	18,80	296.705	12.287	9.081	318.073	51,60	278.900	14.294	5.161	298.354	171,77	32,80	268.695	15.444	2.914	287.053
8	2002	21,51	295.603	10.473	3.282	309.358	54,22	278.956	12.812	3.229	294.997	172,74	32,71	268.009	14.350	3.194	285.552
9	2002	19,52	288.133	13.319	2.009	303.460	52,57	275.518	15.397	3.960	294.875	169,73	33,05	268.067	16.624	5.113	289.804
10	2002	19,79	287.571	16.664	13.527	317.762	52,79	275.680	16.608	7.938	300.226	168,95	33,00	268.548	16.574	4.585	289.708
11	2002	20,20	292.045	11.780	2.130	305.955	52,06	277.146	16.127	4.646	297.919	170,15	31,86	267.702	18.882	6.241	292.826
12	2002	18,14	288.112	11.550	40.247	339.909	50,30	274.234	11.283	40.710	326.227	168,24	32,16	266.406	11.132	40.971	318.509
1	2003	17,99	299.825	25.749	0	325.574	51,02	284.769	19.466	3.231	307.466	174,08	33,03	276.567	16.044	4.991	297.602
2	2003	17,57	301.814	21.387	1.740	324.941	50,26	285.892	16.416	4.494	306.801	175,07	32,69	277.334	13.744	5.974	297.051
3	2003	20,15	294.220	22.242	37.458	353.920	52,59	284.976	16.961	20.163	322.099	172,66	32,44	279.233	13.680	9.420	302.334
4	2003	19,20	296.838	18.755	9.954	325.546	51,96	285.538	13.821	14.491	313.850	172,79	32,76	278.916	10.930	17.149	306.995
5	2003	19,51	295.394	19.392	5.028	319.814	52,89	284.649	19.749	6.528	310.927	172,51	33,38	278.367	19.958	7.405	305.730
6	2003	19,20	298.283	19.758	26.528	344.568	52,03	286.315	14.975	22.167	323.458	173,41	32,83	279.317	12.178	19.617	311.111



## Stéttarfélag íslenskra félagsráðgjafa

		<i>Karlar</i>						<i>Allir</i>					<i>Konur</i>				
MA	AR	STG	DL	YL	ÖL	HL	STG	DL	YL	ÖL	HL	Km.dl.	STG	DL	YL	ÖL	HL
7	2002						54,26	220.352	27.378	4.742	252.472	157,79					
8	2002						55,40	218.314	32.397	4.947	255.657	157,18					
9	2002						55,98	218.068	31.164	6.367	255.598	156,19					
10	2002						57,18	217.361	31.394	6.370	255.125	154,88					
11	2002						57,65	216.964	33.054	5.702	255.720	154,87					
12	2002						58,73	216.526	32.482	40.247	289.254	154,45					
1	2003						60,22	224.228	32.140	5.768	262.136	159,38					
2	2003						59,70	225.758	39.305	5.449	270.512	160,74					
3	2003						61,58	227.062	37.842	5.435	270.338	159,95					
4	2003						61,73	226.286	35.839	14.868	276.993	159,22					
5	2003						63,73	227.787	34.139	5.565	267.490	160,51					
6	2003						62,38	227.532	34.742	6.441	268.715	160,23					

## Stéttarfélag lögfræðinga

		<i>Karlar</i>						<i>Allir</i>					<i>Konur</i>				
MA	AR	STG	DL	YL	ÖL	HL	STG	DL	YL	ÖL	HL	Km.dl.	STG	DL	YL	ÖL	HL
7	2002	109,36	238.272	88.050	16.547	342.869	227,13	230.992	77.808	12.972	321.772	143,41	117,76	224.231	68.296	9.652	302.179
8	2002	111,86	238.212	87.497	13.034	338.743	226,54	231.700	79.563	12.728	323.991	144,63	114,68	225.349	71.823	12.430	309.602
9	2002	109,33	239.021	87.358	15.477	341.857	224,57	232.772	81.279	13.595	327.646	144,55	115,24	226.843	75.510	11.810	314.163
10	2002	109,12	240.032	93.419	14.537	347.987	222,72	233.528	87.333	12.273	333.134	144,27	113,60	227.280	81.488	10.097	318.866
11	2002	115,10	237.711	87.940	14.660	340.311	230,79	233.079	83.596	12.544	329.219	144,25	115,69	228.471	79.275	10.438	318.184
12	2002	113,54	240.059	90.499	52.349	382.907	225,06	233.777	85.515	51.342	370.634	144,58	111,52	227.381	80.440	50.317	358.139
1	2003	111,14	247.317	88.639	20.836	356.793	224,26	242.106	80.200	18.331	340.637	149,20	113,12	236.986	71.907	15.869	324.763
2	2003	112,41	247.572	95.082	16.984	359.638	223,86	243.094	87.046	13.221	343.362	150,06	111,45	238.577	78.942	9.426	326.945
3	2003	116,58	245.833	90.964	12.953	349.751	229,85	241.919	84.976	12.195	339.090	147,75	113,27	237.889	78.812	11.415	328.117
4	2003	115,15	248.724	93.630	22.767	365.122	230,39	243.398	85.855	22.802	352.056	148,48	115,24	238.076	78.086	22.838	339.000
5	2003	117,95	248.821	100.991	19.494	369.306	237,91	243.044	93.425	17.773	354.242	148,49	119,96	237.364	85.985	16.081	339.431
6	2003	111,48	250.341	102.271	27.547	380.159	231,08	244.710	94.744	20.940	360.394	149,41	119,60	239.461	87.728	14.782	341.970

## Útgarður, félag háskólamanna

MA	AR	Karlar					Allir						Konur				
		STG	DL	YL	ÖL	HL	STG	DL	YL	ÖL	HL	Km.dl.	STG	DL	YL	ÖL	HL
7	2002	140,00	216.968	65.392	11.090	293.450	313,53	209.710	48.944	5.977	264.630	142,82	173,53	203.854	35.674	1.852	241.380
8	2002	137,78	218.049	63.369	9.935	291.354	307,15	211.076	46.245	5.823	263.144	144,53	169,37	205.404	32.315	2.478	240.196
9	2002	137,76	218.987	79.941	10.485	309.412	296,95	213.235	57.379	5.799	276.413	145,26	159,19	208.256	37.854	1.745	247.856
10	2002	137,31	221.255	74.064	13.811	309.130	301,83	214.384	56.258	9.176	279.818	145,28	164,52	208.650	41.397	5.308	255.354
11	2002	138,49	220.464	73.737	11.924	306.124	302,17	214.077	56.945	6.873	277.895	145,33	163,68	208.674	42.739	2.598	254.011
12	2002	139,49	221.901	76.146	50.285	348.332	299,55	215.085	57.245	46.963	319.293	145,92	160,06	209.144	40.773	44.068	293.985
1	2003	137,05	227.636	75.905	15.270	318.811	301,59	222.017	57.546	9.185	288.747	150,08	164,54	217.336	42.255	4.116	263.707
2	2003	140,61	228.971	79.342	14.904	323.217	306,99	222.796	59.587	8.765	291.147	150,87	166,38	217.578	42.891	3.576	264.044
3	2003	140,22	229.809	75.188	13.556	318.553	312,57	223.238	56.949	7.960	288.147	149,56	172,36	217.892	42.110	3.408	263.410
4	2003	139,22	230.203	78.695	22.481	331.379	317,49	224.311	57.913	16.461	298.686	150,10	178,27	219.710	41.683	11.759	273.153
5	2003	141,20	231.049	83.383	11.712	326.143	316,62	224.644	60.710	6.539	291.894	150,55	175,42	219.489	42.460	2.376	264.325
6	2003	146,44	229.444	79.699	13.493	322.636	329,50	223.330	57.452	7.970	288.752	149,58	183,06	218.439	39.655	3.552	261.646

## Proskapjálfafélag Íslands

Kaupmáttur miðast við 07-12/1997 = 100,00

MA	AR	Karlar					Allir						Konur				
		STG	DL	YL	ÖL	HL	STG	DL	YL	ÖL	HL	Km.dl.	STG	DL	YL	ÖL	HL
7	2002						137,90	183.380	43.391	16.526	243.297	124,89					
8	2002						132,28	182.824	42.856	16.604	242.284	125,19					
9	2002						129,14	181.447	45.033	19.028	245.508	123,60					
10	2002						129,91	183.071	46.975	22.666	252.713	124,06					
11	2002						133,18	182.869	51.592	19.349	253.811	124,15					
12	2002						129,95	183.327	49.565	57.794	290.685	124,37					
1	2003						134,64	189.695	64.708	19.990	274.394	128,23					
2	2003						131,63	190.478	46.803	24.361	261.643	128,98					
3	2003						132,71	190.564	40.056	21.918	252.538	127,67					
4	2003						132,52	191.340	43.204	32.070	266.614	128,04					
5	2003						136,15	190.858	94.843	19.682	305.382	127,91					
6	2003						140,14	192.218	57.433	22.523	272.174	128,74					

# BHM, ríkisstarfsmenn

Október 2003

## BHM félagin hjá ríkinu, alls

MA	AR	Kerlar				Allir				Konur							
		STG	DL	YL	ÖL	HL	STG	DL	YL	ÖL	HL	STG	DL	YL	ÖL	HL	
7	2002	1.443,97	238.419	61.097	8.147	307.663	4.413,79	220.851	54.984	12.865	288.700	146,28	2.969,81	212.309	52.012	15.158	279.479
8	2002	1.475,28	238.569	62.418	7.865	308.853	4.435,45	221.302	56.750	13.344	291.396	147,37	2.960,18	212.697	53.925	16.074	282.696
9	2002	1.432,31	240.662	70.440	7.811	318.914	4.354,51	222.806	59.528	14.374	296.708	147,61	2.922,20	214.054	54.179	17.591	285.824
10	2002	1.427,31	242.281	71.678	8.570	322.530	4.367,62	223.866	60.802	15.183	299.851	147,54	2.940,32	214.926	55.522	18.393	288.841
11	2002	1.427,33	241.982	70.767	8.694	321.442	4.391,18	223.953	61.223	15.081	300.258	147,86	2.963,85	215.271	56.627	18.156	290.055
12	2002	1.444,38	242.484	72.696	45.315	360.494	4.403,13	224.649	65.690	52.130	342.469	148,22	2.958,75	215.942	62.270	55.457	333.670
1	2003	1.436,84	250.362	67.686	8.660	326.707	4.427,63	232.487	61.397	15.759	309.643	152,84	2.990,79	223.900	58.376	19.169	301.445
2	2003	1.437,48	251.150	66.997	11.780	329.928	4.443,86	232.855	57.931	15.978	306.764	153,34	3.006,40	224.108	53.597	17.984	295.689
3	2003	1.447,33	251.287	69.797	13.847	334.931	4.466,21	233.118	61.645	17.797	312.560	151,89	3.018,89	224.408	57.737	19.690	301.835
4	2003	1.453,41	251.789	70.765	20.050	342.605	4.490,85	233.668	70.119	25.659	329.446	152,07	3.037,42	224.997	69.810	28.342	323.149
5	2003	1.479,20	251.480	75.445	9.703	336.627	4.537,26	233.722	70.826	15.990	320.538	152,33	3.058,06	225.132	68.592	19.031	312.755
6	2003	1.493,69	250.356	67.100	11.481	328.937	4.611,38	232.833	62.895	15.875	311.603	151,66	3.117,69	224.438	60.880	17.980	303.298

### 3.3 Kennarasamband Íslands, ríkisstarfsmenn

#### Kennarasamband Íslands, ríkisstarfsmenn

MA	AR	Kartar				Allir				Konur				
		STG	DL	YL	ÖL	STG	DL	YL	ÖL	STG	DL	YL	ÖL	HL
7	2002	677,48	224.224	7.106	31	1.277,26	221.977	6.448	36	228.461	159,76	159,76	43	225.186
8	2002	694,43	225.192	42.118	138	1.323,90	222.676	32.732	108	255.516	161,14	161,14	74	242.354
9	2002	688,38	225.359	153.660	304	1.314,63	222.577	121.429	301	344.307	160,23	160,23	299	305.818
10	2002	689,89	225.000	119.372	406	1.311,22	222.496	97.400	614	320.510	159,34	159,34	844	293.564
11	2002	690,39	224.972	130.841	385	1.310,50	222.515	107.482	505	330.502	159,64	159,64	639	301.894
12	2002	687,48	225.241	139.827	36.557	1.308,19	222.637	116.720	36.431	375.789	159,62	159,62	36.292	347.174
1	2003	700,16	232.274	101.517	163	1.337,62	229.562	79.180	219	308.961	164,00	164,00	280	281.509
2	2003	692,68	232.723	122.852	262	1.313,13	230.017	98.614	304	328.935	164,60	164,60	351	298.901
3	2003	692,02	232.953	124.708	389	1.310,88	230.120	101.155	420	331.694	162,93	162,93	454	302.223
4	2003	693,23	233.008	124.270	10.265	1.312,54	230.161	101.920	10.358	342.439	162,77	162,77	10.461	314.338
5	2003	694,58	233.217	99.789	497	1.317,04	230.445	85.750	456	316.650	163,21	163,21	410	297.845
6	2003	691,70	233.243	32.042	137	1.311,62	230.601	29.373	257	260.231	163,22	163,22	390	254.439

## Félag íslenskra flugumferðarstjóra

MA	AR	<i>Karlar</i>					HL
		STG	DL	YL	ÖL	HL	
7	2002	82,31	324.077	159.814	149.386	633.277	
8	2002	80,90	323.851	173.516	154.120	651.487	
9	2002	81,11	324.301	129.540	146.141	599.982	
10	2002	82,75	325.044	121.458	148.047	594.549	
11	2002	81,57	324.019	126.297	151.997	602.313	
12	2002	81,35	324.432	116.441	189.696	630.570	
1	2003	88,56	339.071	128.547	151.497	619.115	
2	2003	79,12	336.582	132.252	156.992	625.825	
3	2003	80,05	336.741	140.048	156.407	633.195	
4	2003	79,74	334.503	139.469	168.725	642.696	
5	2003	79,27	335.016	164.077	161.130	660.223	
6	2003	82,70	330.758	163.310	157.995	652.063	

## Kjarafélag Tæknifræðingafélags Íslands

MA	AR	<i>Karlar</i>					HL
		STG	DL	YL	ÖL	HL	
7	2002						
8	2002						
9	2002						
10	2002						
11	2002						
12	2002						
1	2003						
2	2003						
3	2003						
4	2003						
5	2003						
6	2003						

<i>Allir</i>						
STG	DL	YL	ÖL	HL	Km.dl.	
106,96	307.408	145.266	140.796	593.470	226,69	
105,55	307.020	158.722	144.804	610.545	227,63	
105,76	307.761	117.910	137.350	563.021	227,00	
106,40	308.687	108.933	140.081	557.700	226,50	
105,22	307.787	115.794	143.960	567.541	226,25	
105,00	308.073	105.401	181.887	595.361	226,30	
112,21	322.457	115.979	144.366	582.802	236,02	
103,77	319.671	121.963	149.160	590.794	234,38	
104,70	319.943	123.301	148.353	591.596	232,09	
104,13	318.746	128.359	159.463	606.568	230,95	
101,92	320.068	150.026	151.775	621.870	232,26	
107,31	315.438	145.881	147.538	608.856	228,75	

<i>Allir</i>						
STG	DL	YL	ÖL	HL	Km.dl.	
129,00	250.458	90.876	13.825	355.159	152,88	
128,79	250.619	102.876	12.190	365.686	153,81	
129,93	250.284	97.632	13.306	361.223	152,81	
127,99	250.886	115.111	13.571	379.569	152,38	
128,22	250.980	104.313	11.202	366.495	152,71	
127,63	250.215	104.426	52.223	406.864	152,14	
127,71	259.788	101.135	14.434	375.356	157,40	
131,29	260.808	107.581	11.064	379.453	158,29	
131,90	260.799	102.258	16.948	380.005	156,60	
134,92	261.156	104.659	25.662	391.476	156,63	
133,55	261.372	97.656	16.500	375.529	157,00	
132,50	262.901	109.120	11.999	384.020	157,82	

<i>Konur</i>				
STG	DL	YL	ÖL	HL
24,65	251.747	96.689	112.113	460.549
24,65	251.782	110.167	114.228	476.177
24,65	253.339	79.641	108.423	441.403
23,65	251.453	65.109	112.209	428.771
23,65	251.799	79.570	116.239	447.609
23,65	251.799	67.424	155.027	474.250
23,65	260.247	68.921	117.664	446.832
24,65	265.394	88.940	124.025	478.358
24,65	265.394	68.917	122.198	456.509
24,39	267.229	92.039	129.181	488.449
22,65	267.756	100.850	119.035	487.641
24,61	263.955	87.311	112.395	463.661

<i>Konur</i>				
STG	DL	YL	ÖL	HL

**Leikarafélag Íslands***Kaupmáttur miðast við meðaltal ársins 1997 = 100,00***Karlar**

MA	AR	STG	DL	YL	ÖL	HL
7	2002	18,00	202.189	0	0	202.189
8	2002	18,39	201.056	0	0	201.056
9	2002	19,61	198.886	7.528	977	207.391
10	2002	20,11	239.363	17.190	6.600	263.152
11	2002	22,60	228.932	33.365	6.447	268.744
12	2002	25,09	203.062	15.274	32.927	251.262
1	2003	26,16	244.815	22.438	8.492	275.746
2	2003	26,16	243.756	16.638	8.833	269.227
3	2003	26,36	264.630	16.695	9.134	290.459
4	2003	25,25	224.768	22.792	13.698	261.258
5	2003	24,75	224.417	11.581	4.211	240.209
6	2003	24,77	203.091	8.742	1.648	213.480

**Allir**

STG	DL	YL	ÖL	HL	Km.dl.
34,00	199.409	0	0	199.409	119,87
35,56	197.272	2.952	69	200.294	119,22
41,16	193.542	6.594	1.290	201.426	116,37
40,57	233.758	14.506	6.262	254.526	139,82
45,94	217.427	24.602	5.498	247.527	130,28
50,17	195.423	13.561	31.941	240.925	117,02
51,25	232.128	17.052	6.731	255.911	138,50
50,23	235.685	13.784	7.853	257.322	140,86
48,82	256.206	16.227	8.710	281.142	151,50
49,16	219.286	16.078	13.326	248.690	129,52
48,32	219.755	10.010	4.299	234.065	129,99
46,69	204.094	6.679	2.401	213.175	120,65

**Konur**

STG	DL	YL	ÖL	HL
16,00	196.280	0	0	196.280
17,17	193.220	6.114	144	199.478
21,55	188.680	5.743	1.575	195.998
20,47	228.252	11.869	5.929	246.050
23,34	206.290	16.119	4.579	226.989
25,09	187.785	11.849	30.955	230.588
25,10	218.905	11.438	4.895	235.238
24,07	226.914	10.682	6.789	244.385
22,46	246.322	15.677	8.211	270.210
23,91	213.498	8.991	12.933	235.421
23,57	214.860	8.360	4.392	227.612
21,91	205.229	4.347	3.254	212.830

**Læknafélag Íslands, sjúkrahúslæknar****Karlar**

MA	AR	STG	DL	YL	ÖL	HL
7	2002	379,13	387.760	130.430	141.591	659.781
8	2002	370,16	398.875	125.810	156.702	681.388
9	2002	368,62	411.279	124.050	146.162	681.491
10	2002	366,27	395.497	120.457	151.949	667.904
11	2002	349,27	413.442	131.178	153.484	698.104
12	2002	350,38	420.871	139.077	200.813	760.761
1	2003	349,03	427.491	134.985	167.268	729.744
2	2003	349,98	418.871	120.129	154.600	693.601
3	2003	352,56	427.789	130.517	171.469	729.775
4	2003	351,79	421.466	128.628	177.697	727.790
5	2003	387,83	424.085	123.956	150.957	698.998
6	2003	373,40	421.988	113.422	153.700	689.109

**Allir**

STG	DL	YL	ÖL	HL	Km.dl.
511,80	371.664	133.786	128.235	633.685	167,73
507,17	379.113	132.469	137.600	649.182	172,02
497,19	396.030	129.290	133.897	659.217	178,77
496,72	381.302	130.990	137.476	649.768	171,23
476,42	399.988	137.048	138.670	675.706	179,94
480,13	401.408	141.151	184.485	727.044	180,46
485,22	407.044	138.483	148.386	693.914	182,34
487,50	401.118	123.491	137.491	662.100	179,99
489,85	411.213	136.477	149.439	697.129	182,56
489,09	405.775	134.773	157.268	697.816	179,94
537,02	406.519	127.840	136.151	670.509	180,54
535,23	399.640	117.831	134.127	651.597	177,37

**Konur**

STG	DL	YL	ÖL	HL
132,67	325.668	143.376	90.067	559.111
137,01	325.722	150.457	85.994	562.173
128,57	352.310	144.313	98.731	595.355
130,45	341.445	160.562	96.838	598.845
127,15	363.030	153.173	97.977	614.181
129,75	348.850	146.753	140.389	635.992
136,20	354.643	147.449	99.998	602.091
137,51	355.935	132.049	93.945	581.930
137,30	368.648	151.782	92.869	613.299
137,30	365.569	150.520	104.924	621.012
149,19	360.854	137.936	97.661	596.451
161,83	348.074	128.005	88.966	565.045

## Starfsmannafélag Sinfóníuhljómsh. Ísl.

		<i>Karlar</i>						<i>Allir</i>						<i>Konur</i>				
MA	AR	STG	DL	YL	ÖL	HL	STG	DL	YL	ÖL	HL	Km.dl.	STG	DL	YL	ÖL	HL	
7	2002	38,50	225.075	2.765	0	227.840	79,00	222.033	2.848	0	224.881	160,99	40,50	219.141	2.928	0	222.068	
8	2002	38,50	225.111	2.765	0	227.876	78,99	222.047	2.849	0	224.895	161,87	40,49	219.132	2.928	0	222.061	
9	2002	40,82	224.124	4.239	0	228.363	79,41	221.802	4.159	0	225.962	160,86	38,59	219.347	4.075	0	223.422	
10	2002	41,20	230.555	4.122	0	234.677	80,36	225.583	5.334	0	230.917	162,76	39,16	220.352	6.609	0	226.961	
11	2002	43,82	228.422	6.503	0	234.926	84,45	224.636	6.304	0	230.940	162,36	40,63	220.553	6.088	0	226.642	
12	2002	40,32	228.448	10.008	36.512	274.969	80,39	224.739	9.169	37.432	271.340	162,33	40,07	221.007	8.325	38.358	267.689	
1	2003	47,83	231.631	8.810	0	240.441	88,27	229.308	9.647	0	238.955	165,03	40,44	226.560	10.638	0	237.198	
2	2003	45,32	232.306	4.754	56	237.115	84,87	229.963	5.241	59	235.263	165,79	39,55	227.278	5.799	64	233.141	
3	2003	43,65	232.092	5.196	58	237.346	83,96	229.817	4.648	30	234.495	163,92	40,31	227.353	4.055	0	231.408	
4	2003	42,37	231.729	3.840	9.791	245.359	83,12	229.787	3.629	9.835	243.251	163,71	40,75	227.768	3.410	9.881	241.059	
5	2003	40,84	236.581	30.465	0	267.046	77,55	231.884	30.461	0	262.345	165,45	36,71	226.658	30.457	0	257.115	
6	2003	46,49	236.254	13.111	0	249.365	88,49	230.054	13.910	0	243.964	164,04	42,00	223.191	14.795	0	237.986	

## Stéttarfélag verkfræðinga

		<i>Karlar</i>						<i>Allir</i>						<i>Konur</i>				
MA	AR	STG	DL	YL	ÖL	HL	STG	DL	YL	ÖL	HL	Km.dl.	STG	DL	YL	ÖL	HL	
7	2002	178,68	261.973	96.509	16.113	374.595	206,96	260.731	93.226	14.585	368.542	147,27	28,29	252.884	72.488	4.935	330.308	
8	2002	181,69	262.555	96.969	18.127	377.651	211,59	260.752	91.507	16.055	368.315	148,08	29,90	249.798	58.316	3.464	311.578	
9	2002	172,83	264.803	110.701	14.695	390.198	202,13	262.780	104.570	12.935	380.285	148,46	29,30	250.850	68.401	2.555	321.805	
10	2002	171,90	266.376	116.779	15.634	398.789	199,68	264.544	111.285	14.323	390.152	148,69	27,78	253.212	77.285	6.211	336.708	
11	2002	172,83	266.314	110.191	16.510	393.016	200,39	264.853	105.906	14.756	385.514	149,13	27,56	255.684	79.034	3.751	338.469	
12	2002	172,33	266.938	114.902	49.508	431.347	200,05	265.474	109.292	48.377	423.143	149,37	27,72	256.373	74.417	41.349	372.138	
1	2003	174,81	277.279	103.722	12.751	393.752	204,38	275.825	98.535	11.565	385.926	154,65	29,57	267.228	67.876	4.555	339.659	
2	2003	179,13	278.184	106.286	25.170	409.640	210,04	276.503	100.008	23.136	399.647	155,29	30,91	266.759	63.630	11.347	341.735	
3	2003	182,87	278.754	104.571	24.166	407.492	209,90	277.317	100.204	23.277	400.798	154,09	27,03	267.591	70.658	17.263	355.512	
4	2003	179,25	279.721	113.389	20.349	413.459	205,78	277.416	108.689	19.531	405.636	153,97	26,53	261.845	76.931	14.004	352.781	
5	2003	186,56	281.496	109.562	9.683	400.741	215,68	278.716	103.249	8.816	390.781	154,92	29,12	260.904	62.804	3.264	326.972	
6	2003	186,00	278.431	110.908	15.257	404.596	217,51	274.997	104.211	13.464	392.672	152,76	31,52	254.732	64.683	2.881	322.295	

# Ýmsir, ríkisstarfsmenn

**Kjaranefnd heilsgæslulaeknar** *Kaupmáttur miðast við meðaltal ársins 1997 = 100,00. Ath. Samkvæmt úrskurði kjaranefndar um laun og starfskjör heilsgæslulekna þann 15. október 2002 falla allar greiðslur frá Tryggingastofnun ríkisins til heilsgæslulekna niður.*

		Kerlar						Allir						Konur					
MA	AR	STG	DL	YL	ÖL	HL	STG	DL	YL	ÖL	HL	Km.dl.	STG	DL	YL	ÖL	HL		
7	2002	95,01	441,067	6,784	151,249	599,101	130,81	426,551	7,078	141,835	575,464	275,19	35,80	388,024	7,858	116,849	512,731		
8	2002	90,41	448,642	9,355	159,987	617,985	123,46	432,324	6,759	148,818	587,901	280,43	33,05	387,680	-341	118,262	505,601		
9	2002	83,41	473,584	4,850	173,533	651,966	113,51	454,509	1,685	163,952	620,146	293,30	30,10	401,652	-7,084	137,403	531,971		
10	2002	81,88	471,276	1,611	170,755	643,643	110,23	480,496	1,197	160,936	622,629	295,62	28,35	429,363	0	132,581	561,943		
11	2002	82,80	511,102	38,079	154,836	704,017	110,71	495,562	38,053	133,646	667,261	318,70	27,92	449,474	37,976	70,799	558,249		
12	2002	86,75	505,761	37,741	180,248	723,750	113,00	497,416	39,876	174,448	711,741	319,68	26,25	469,838	46,933	155,281	672,052		
1	2003	85,72	525,409	49,460	159,631	734,500	112,77	517,385	51,276	147,744	716,404	331,32	27,06	491,965	57,028	110,262	659,076		
2	2003	83,96	544,532	47,786	167,328	759,645	109,61	535,601	49,078	152,104	736,784	343,57	25,65	506,365	53,311	102,081	661,937		
3	2003	86,54	544,874	55,043	163,532	763,450	114,52	535,776	59,438	145,882	741,097	340,04	27,98	507,636	73,033	91,291	671,960		
4	2003	90,60	528,602	51,134	151,970	731,706	116,27	517,115	54,719	142,163	713,997	327,81	25,67	476,579	67,369	107,553	651,501		
5	2003	91,51	536,385	56,142	153,863	746,390	115,84	529,789	56,435	147,227	733,451	336,34	24,32	504,972	57,536	122,257	684,764		
6	2003	104,29	503,959	42,446	135,685	682,090	135,14	495,371	45,989	128,250	669,610	314,29	30,85	466,343	57,963	103,120	627,426		

*Mínustölur í öðrum launum staða af leiðréttingarfærslum.*

## Kjaranefnd prófessorar

*Kaupmáttur miðast við meðaltal ársins 1997 = 100,00*

		Kerlar						Allir						Konur					
MA	AR	STG	DL	YL	ÖL	HL	STG	DL	YL	ÖL	HL	Km.dl.	STG	DL	YL	ÖL	HL		
7	2002	155,88	338,745	44,261	24,925	407,931	186,25	335,905	46,084	22,507	404,496	179,65	30,37	321,329	55,439	10,098	386,866		
8	2002	156,90	338,250	46,185	437,929	822,364	186,64	335,764	47,165	460,333	843,263	180,54	29,74	322,648	52,338	578,534	953,519		
9	2002	156,07	342,162	42,421	22,390	406,972	185,44	339,774	44,185	21,878	405,838	181,76	29,37	327,088	53,562	19,159	399,809		
10	2002	155,40	342,383	44,808	20,159	407,350	184,77	339,952	45,016	18,838	403,806	180,91	29,37	327,088	46,119	11,847	385,054		
11	2002	156,39	342,782	43,241	21,576	407,599	185,76	340,301	42,860	20,399	403,559	181,42	29,37	327,088	40,833	14,128	382,049		
12	2002	156,42	342,154	66,448	119,058	527,660	185,79	339,772	64,767	112,315	516,854	181,01	29,37	327,088	55,810	76,402	459,299		
1	2003	152,57	351,543	80,481	25,625	457,649	181,94	349,179	77,090	24,908	451,178	185,36	29,37	336,900	59,474	21,185	417,559		
2	2003	153,17	351,449	39,813	24,564	415,826	182,54	349,108	39,531	23,032	411,671	185,64	29,37	336,900	38,060	15,040	390,000		
3	2003	154,02	351,846	41,527	20,251	413,624	183,39	349,453	41,175	19,792	410,420	183,85	29,37	336,900	39,330	17,386	393,616		
4	2003	154,22	351,811	40,907	29,949	422,668	183,59	349,426	40,814	27,907	418,047	183,62	29,37	336,900	40,328	16,557	393,786		
5	2003	153,79	350,570	48,288	44,150	443,008	183,16	348,378	53,188	42,124	443,690	183,34	29,37	336,900	78,847	31,510	447,258		
6	2003	151,69	350,712	43,059	51,171	444,942	181,64	348,149	42,963	51,561	442,673	183,11	29,94	335,164	42,476	53,540	431,181		



## Kjaradómur aðrir

		Kartlar						Konur								
MA	AR	STG	DL	YL	ÖL	HL	STG	DL	YL	ÖL	HL	STG	DL	YL	ÖL	HL
7	2002	58,97	368,621	15,942	14,679	399,242	86,23	362,031	12,195	13,635	387,861	27,26	347,773	4,086	11,379	363,237
8	2002	56,70	359,863	14,929	15,267	390,060	83,70	352,622	11,444	14,048	378,113	27,00	337,415	4,125	11,487	353,026
9	2002	56,86	362,590	14,732	15,225	392,547	83,93	355,413	11,306	14,009	380,727	27,08	340,342	4,113	11,454	355,909
10	2002	58,43	364,199	14,868	15,191	394,258	87,09	356,619	11,254	13,753	381,627	28,66	341,166	3,886	10,822	355,873
11	2002	58,11	365,721	14,798	16,027	396,546	86,81	357,815	11,189	14,301	383,305	28,70	341,804	3,881	10,807	356,492
12	2002	56,99	363,552	33,093	49,209	445,854	84,39	355,078	23,667	47,455	426,200	27,40	337,453	4,064	43,808	385,325
1	2003	56,89	384,907	15,421	14,592	414,920	84,05	377,227	11,856	13,825	402,908	27,16	361,141	4,387	12,218	377,746
2	2003	58,63	390,076	16,022	14,159	420,257	86,11	382,748	12,551	13,495	408,794	27,48	367,110	5,145	12,078	384,333
3	2003	57,00	390,507	16,145	14,564	421,215	84,16	382,912	12,351	13,807	409,071	27,16	366,970	4,388	12,220	383,578
4	2003	56,20	388,956	16,885	24,208	430,049	83,30	381,176	12,822	23,259	417,257	27,10	365,042	4,397	21,290	390,729
5	2003	78,89	428,493	1,700	18,165	448,359	118,75	421,655	1,129	14,745	437,529	39,86	408,121	0	7,975	416,096
6	2003	75,35	445,573	20,396	23,976	489,946	105,05	441,059	14,630	24,964	480,653	29,70	429,606	0	27,471	457,076

## Kjaranefnd aðrir

Kaupmáttur miðast við 03/1993 = 100,00

		Kartlar						Konur								
MA	AR	STG	DL	YL	ÖL	HL	STG	DL	YL	ÖL	HL	STG	DL	YL	ÖL	HL
7	2002	238,82	397,488	13,797	77,051	488,336	298,89	394,077	13,538	75,060	482,675	60,07	380,513	12,510	67,144	460,167
8	2002	238,54	397,758	14,212	76,960	488,930	301,13	394,467	13,754	74,789	483,010	62,59	381,926	12,006	66,514	460,447
9	2002	236,97	398,133	16,319	75,866	490,317	297,72	394,192	15,591	73,580	483,363	60,75	378,822	12,752	64,664	456,239
10	2002	240,84	398,331	17,038	75,787	491,157	302,90	394,438	16,376	74,237	485,050	62,06	379,330	13,806	68,218	461,354
11	2002	242,72	398,166	15,356	75,046	488,568	306,90	394,323	14,669	72,556	481,547	64,18	379,790	12,071	63,138	454,998
12	2002	245,02	398,513	15,247	125,850	539,610	308,02	394,628	14,643	122,802	532,074	63,00	379,520	12,297	110,950	502,767
1	2003	246,99	431,607	16,631	83,033	531,271	307,99	426,793	16,999	80,775	524,567	61,00	407,301	18,489	71,635	497,425
2	2003	248,97	430,175	15,893	82,058	528,126	311,42	425,290	15,927	79,936	521,152	62,45	405,813	16,064	71,474	493,351
3	2003	245,90	429,052	16,078	82,016	527,146	309,86	424,444	15,997	80,622	521,063	63,96	406,726	15,685	75,264	497,675
4	2003	243,45	429,378	16,587	82,310	528,274	305,21	425,021	14,833	81,106	520,960	61,76	407,847	7,922	76,360	492,129
5	2003	244,26	429,372	15,963	82,374	527,709	307,49	424,651	15,497	80,074	520,222	63,23	406,410	13,698	71,190	491,298
6	2003	244,17	439,433	14,830	95,537	549,800	307,63	434,086	14,412	93,083	541,581	63,46	413,515	12,803	83,640	509,958

## Ýmsir, ríkisstarfsmenn

### Útan félaga

		Kjarlar					Allir					Konur					
MA	AR	STG	DL	YL	ÖL	HL	STG	DL	YL	ÖL	HL	Km.di.	STG	DL	YL	ÖL	HL
7	2002	71,60	301,816	92,464	24,667	418,948	84,10	302,271	91,416	25,403	419,091	147,57	12,30	304,877	85,415	29,616	419,908
8	2002	71,19	303,655	104,873	31,990	440,518	83,49	303,552	98,499	31,711	433,762	149,00	12,30	302,957	61,606	30,097	394,660
9	2002	70,86	302,988	98,962	24,171	426,121	82,27	301,810	97,543	24,507	423,860	147,38	11,41	294,495	88,730	26,593	409,818
10	2002	70,87	304,155	102,815	22,516	429,485	82,19	302,876	99,918	23,065	425,858	147,13	11,32	294,870	81,778	26,502	403,150
11	2002	71,93	305,144	99,328	23,554	428,025	83,43	303,625	94,929	23,871	422,425	147,76	11,50	294,127	67,416	25,853	387,397
12	2002	72,74	304,910	108,605	62,087	475,601	84,21	303,451	103,144	63,179	469,775	147,58	11,47	294,204	68,513	70,104	432,821
1	2003	70,10	317,329	96,598	26,130	440,057	83,10	316,329	91,786	25,327	433,442	153,29	13,00	310,936	65,839	21,002	397,776
2	2003	72,08	314,929	104,042	24,527	443,498	85,58	315,161	98,264	24,266	437,691	152,98	13,50	316,401	67,412	22,870	406,683
3	2003	73,43	315,747	100,773	25,077	441,596	86,84	315,911	95,571	24,832	436,321	151,72	13,41	316,814	67,130	23,493	407,436
4	2003	69,54	320,039	97,630	34,726	452,395	83,04	319,447	93,319	34,257	447,023	153,24	13,50	316,401	71,110	31,842	419,353
5	2003	73,72	329,252	85,848	36,496	451,596	86,92	326,830	82,508	36,686	446,024	157,01	13,20	313,307	63,853	37,748	414,907
6	2003	70,65	329,719	102,226	30,172	462,117	85,03	328,919	94,950	30,209	454,078	157,92	14,38	324,991	59,200	30,390	414,582

### Kjaradómur, dómarmar

		Kjarlar					Allir					Konur					
MA	AR	STG	DL	YL	ÖL	HL	STG	DL	YL	ÖL	HL	Km.di.	STG	DL	YL	ÖL	HL
7	2002	36,82	382,264	158,210	40,293	580,767	47,82	381,934	157,240	37,184	576,358	186,46	11,00	380,830	153,992	26,778	561,600
8	2002	37,00	382,191	163,455	46,112	591,759	48,00	381,879	160,976	37,437	580,292	187,45	11,00	380,830	152,636	8,258	541,724
9	2002	37,00	382,545	157,881	38,774	579,200	48,00	382,152	157,740	34,933	574,824	186,61	11,00	380,830	157,266	22,012	560,107
10	2002	37,00	382,191	155,591	36,735	574,518	48,00	381,879	155,586	33,510	570,976	185,51	11,00	380,830	155,570	22,663	559,063
11	2002	37,00	383,091	159,739	40,943	583,773	48,00	382,573	159,872	36,352	578,797	186,18	11,00	380,830	160,318	20,911	562,059
12	2002	37,00	383,250	159,569	73,600	616,420	48,00	382,695	158,575	68,687	609,957	186,11	11,00	380,830	155,231	52,159	588,219
1	2003	37,00	408,566	165,327	45,191	619,084	49,00	407,830	165,849	44,792	618,471	197,63	12,00	405,559	167,460	43,562	616,581
2	2003	37,00	408,566	164,140	34,458	607,164	49,00	408,116	165,035	37,139	610,289	198,10	12,00	406,726	167,793	45,405	619,923
3	2003	37,00	408,566	163,777	35,421	607,764	49,00	408,116	164,190	35,543	607,849	196,00	12,00	406,726	165,464	35,921	608,110
4	2003	37,00	408,566	163,816	52,068	624,450	49,00	408,116	164,220	49,225	621,561	195,77	12,00	406,726	165,464	40,461	612,651
5	2003	37,00	466,906	0	217,522	684,428	49,00	466,073	0	222,210	688,282	223,91	12,00	463,503	0	236,664	700,167
6	2003	37,00	466,906	0	214,164	681,071	49,00	466,073	0	215,912	681,985	223,77	12,00	463,503	0	221,300	684,802

**Kjaranefnd Prestar Þjóðkirkjunnar***Kaupmáttur miðast við 01/1993 = 100,00 og tvöfalt mánaðarkaup greiðist í febrúar ár hvert sem og stöðugildi.*

		<b>Karlar</b>					<b>Allir</b>					<b>Konur</b>					
MA	AR	STG	DL	YL	ÖL	HL	STG	DL	YL	ÖL	HL	Km.dl.	STG	DL	YL	ÖL	HL
7	2002	174,95	260.740	0	46.605	307.345	222,77	261.331	0	45.897	307.228	195,21	47,82	263.493	0	43.306	306.799
8	2002	105,13	262.575	0	75.680	338.255	138,13	263.101	63	73.880	337.044	197,60	33,00	264.777	263	68.147	333.187
9	2002	109,98	262.739	0	75.775	338.514	143,98	263.203	0	73.918	337.121	196,66	34,00	264.703	0	67.912	332.615
10	2002	110,81	262.717	0	75.597	338.314	146,61	263.162	0	73.130	336.292	195,61	35,80	264.542	0	65.495	330.036
11	2002	114,04	262.935	0	74.521	337.457	147,11	263.346	0	73.080	336.427	196,09	33,07	264.765	0	68.111	332.875
12	2002	112,20	262.989	0	121.808	384.797	145,60	263.400	0	120.295	383.695	196,00	33,40	264.782	0	115.212	379.994
1	2003	112,61	281.503	618	80.688	362.809	145,67	281.902	477	78.915	361.295	209,02	33,07	283.260	0	72.879	356.140
2	2003	223,12	275.603	0	39.997	315.601	286,04	275.843	0	39.625	315.468	204,87	62,92	276.693	0	38.303	314.996
3	2003	111,18	281.942	0	80.684	362.626	144,31	282.235	0	78.928	361.163	207,40	33,13	283.220	0	73.032	356.252
4	2003	110,44	283.096	0	80.767	363.863	144,01	283.122	0	78.937	362.059	207,80	33,57	283.211	0	72.914	356.125
5	2003	111,76	282.997	0	79.834	362.831	146,41	283.010	0	77.299	360.309	208,03	34,65	283.052	0	69.122	352.173
6	2003	108,15	288.507	0	94.623	383.130	139,72	288.441	0	92.291	380.732	211,89	31,57	288.216	0	84.301	372.517

**Stéttarfélag íslenskra lyfjafraeðinga***Kaupmáttur miðast við meðaltal ársins 1991 = 100,00*

		<b>Karlar</b>					<b>Allir</b>					<b>Konur</b>					
MA	AR	STG	DL	YL	ÖL	HL	STG	DL	YL	ÖL	HL	Km.dl.	STG	DL	YL	ÖL	HL
7	2002						22,17	237.633	89.536	4.177	331.346	120,69					
8	2002						22,34	237.440	85.330	1.792	324.562	121,25					
9	2002						22,03	238.712	94.499	4.124	337.335	121,27					
10	2002						22,73	238.921	93.391	3.726	336.038	120,74					
11	2002						21,89	238.701	94.641	3.508	336.850	120,85					
12	2002						21,94	238.669	88.464	41.360	368.493	120,75					
1	2003						21,76	246.097	95.293	4.009	345.400	124,06					
2	2003						21,35	246.094	94.484	2.229	342.807	124,27					
3	2003						21,03	246.023	91.913	2.790	340.725	122,92					
4	2003						38,26	296.844	78.567	34.763	410.174	148,14					
5	2003						38,13	297.275	73.997	22.332	393.603	148,57					
6	2003						38,13	299.477	72.164	19.060	390.702	149,58					

# Ýmsir, ríkisstarfsmenn

## Starfsmannafélag Alþingis

Kaupmáttur miðast við 01/1991 = 100,00

		Karlur						Allir						Konur							
MA	AR	STG	DL	YL	ÖL	HL	STG	DL	YL	ÖL	HL	STG	DL	YL	ÖL	HL	STG	DL	YL	ÖL	HL
7	2002	72,02	223,152	6,746	73,516	303,413	141,06	210,158	5,798	55,127	271,084	69,04	196,604	4,809	35,946	237,360	69,04	196,604	4,809	35,946	237,360
8	2002	71,44	223,982	14,952	75,428	314,362	140,59	210,654	10,058	58,528	279,239	69,15	196,884	5,001	41,068	242,954	69,15	196,884	5,001	41,068	242,954
9	2002	68,01	226,048	10,822	75,587	312,456	139,43	210,336	7,893	54,991	273,220	71,42	195,373	5,104	35,377	235,854	71,42	195,373	5,104	35,377	235,854
10	2002	66,84	228,318	35,309	77,454	341,080	138,86	210,661	26,863	55,870	293,394	72,02	194,273	19,025	35,837	249,135	72,02	194,273	19,025	35,837	249,135
11	2002	67,84	227,916	19,013	76,721	323,649	143,12	210,170	15,062	54,443	279,675	75,27	194,176	11,500	34,365	240,041	75,27	194,176	11,500	34,365	240,041
12	2002	69,44	228,236	42,132	113,921	384,289	147,16	211,472	31,895	91,167	334,534	77,72	196,492	22,748	70,836	290,076	77,72	196,492	22,748	70,836	290,076
1	2003	70,73	245,305	15,716	77,208	338,228	148,49	224,298	14,175	56,667	295,140	77,76	205,189	12,774	37,982	255,944	77,76	205,189	12,774	37,982	255,944
2	2003	70,47	246,983	13,241	76,012	336,236	149,09	225,089	13,464	57,184	295,737	78,62	205,466	13,664	40,308	259,437	78,62	205,466	13,664	40,308	259,437
3	2003	68,36	246,095	14,742	77,030	337,867	147,59	224,663	16,419	56,422	297,505	79,23	206,171	17,866	38,642	262,679	79,23	206,171	17,866	38,642	262,679
4	2003	69,78	251,747	16,996	194,817	463,560	148,28	230,143	15,616	163,172	408,931	78,49	210,935	14,390	135,037	360,362	78,49	210,935	14,390	135,037	360,362
5	2003	70,76	256,557	17,852	70,283	344,691	147,75	232,506	11,677	51,031	295,214	76,99	210,403	6,001	33,337	249,742	76,99	210,403	6,001	33,337	249,742
6	2003	73,98	253,278	13,466	66,878	333,622	151,54	232,158	13,091	53,571	298,820	77,56	212,014	12,733	40,879	265,625	77,56	212,014	12,733	40,879	265,625

### 3.5 Starfsmenn Reykjavíkurborgar

Október 2003

Kaupmáttur hjá Reykjavíkurborg miðast við meðaltal 1990 = 100,00, nema annað sé tekið fram.

#### Starfsmannafélag Reykjavíkurborgar án háskólahóps

		Kartlar						Allir						Konur					
MA	AR	STG	DL	YL	ÖL	HL	STG	DL	YL	ÖL	HL	Km.dl.	STG	DL	YL	ÖL	HL		
7	2002	977,47	129,039	45,348	12,203	186,591	2,264,39	127,285	32,863	8,249	168,397	137,22	1,286,92	125,953	23,380	5,246	154,579		
8	2002	821,86	135,513	57,483	14,080	207,076	2,007,24	132,470	38,793	9,161	180,424	143,58	1,185,38	130,360	25,834	5,751	161,946		
9	2002	721,83	139,378	63,891	16,716	219,885	1,849,88	135,306	40,874	9,531	185,711	145,90	1,128,05	132,700	26,210	4,933	163,843		
10	2002	721,73	139,282	59,532	16,955	215,769	1,862,33	135,242	39,720	9,491	184,452	145,07	1,140,60	132,685	27,183	4,767	164,636		
11	2002	727,21	139,350	57,267	17,781	214,398	1,873,13	135,163	36,584	9,934	181,681	145,25	1,145,92	132,505	23,459	4,955	160,919		
12	2002	729,97	143,294	55,513	55,392	254,199	1,868,80	138,902	36,690	47,263	222,855	149,16	1,138,83	136,088	24,624	42,052	202,764		
1	2003	752,63	138,473	68,893	20,829	228,196	1,924,45	134,431	42,196	12,029	188,656	143,85	1,171,82	131,835	25,049	6,377	163,260		
2	2003	763,18	137,754	60,807	19,253	217,814	1,926,79	135,146	39,937	11,476	186,559	144,86	1,163,61	133,436	26,249	6,375	166,059		
3	2003	772,66	137,404	61,445	17,754	216,603	1,948,13	134,832	39,618	10,828	185,278	142,99	1,175,47	133,141	25,271	6,276	164,688		
4	2003	768,44	138,541	60,233	28,257	227,031	1,952,31	135,049	39,459	20,314	194,822	143,05	1,183,87	132,782	25,975	15,159	173,915		
5	2003	781,14	138,459	71,693	16,973	227,125	1,986,80	134,785	45,082	11,039	190,906	142,98	1,205,66	132,405	27,841	7,194	167,440		
6	2003	1,000,40	131,791	47,765	14,633	194,189	2,397,47	129,154	32,942	9,770	171,866	136,92	1,397,07	127,266	22,328	6,288	155,882		

#### Starfsmannafélag Reykjavíkurborgar háskólahópur

		Kartlar						Allir						Konur					
MA	AR	STG	DL	YL	ÖL	HL	STG	DL	YL	ÖL	HL	Km.dl.	STG	DL	YL	ÖL	HL		
7	2002	86,77	213,063	59,490	3,434	275,986	275,27	191,868	36,451	3,668	231,988	141,60	188,50	182,112	25,846	3,777	211,735		
8	2002	85,95	210,816	60,991	3,084	274,891	267,56	191,835	40,516	3,486	235,838	142,35	181,61	182,852	30,827	3,677	217,356		
9	2002	82,72	215,836	64,243	5,318	285,396	278,64	193,743	42,583	5,032	241,358	143,02	195,92	184,414	33,438	4,911	222,764		
10	2002	84,24	211,842	69,780	5,500	287,122	285,94	192,162	44,306	4,723	241,191	141,12	201,70	183,943	33,666	4,398	222,008		
11	2002	83,94	211,846	77,630	5,628	295,104	288,38	192,091	51,722	5,017	248,831	141,32	204,44	183,981	41,085	4,766	229,832		
12	2002	86,11	222,050	85,207	45,225	352,482	291,22	198,176	50,349	40,948	289,474	145,69	205,11	188,153	35,715	39,153	263,021		
1	2003	90,12	211,252	64,424	12,417	288,093	298,82	193,799	40,773	7,509	242,081	141,97	208,70	186,263	30,561	5,389	222,213		
2	2003	89,11	208,974	73,109	12,443	294,526	297,59	194,515	45,942	7,835	248,295	142,73	208,48	188,335	34,333	5,866	228,534		
3	2003	88,61	211,151	70,399	13,374	294,924	301,62	194,201	43,852	8,004	246,056	140,99	213,01	187,150	32,808	5,770	225,728		
4	2003	91,70	208,041	76,178	23,783	308,002	304,67	193,785	46,355	18,400	258,547	140,52	212,97	187,647	33,514	16,091	237,253		
5	2003	92,88	209,033	78,751	12,020	299,804	305,27	195,345	46,759	7,652	249,757	141,87	212,39	189,359	32,769	5,742	227,870		
6	2003	99,28	206,906	66,212	10,064	283,181	327,24	190,820	40,874	6,558	238,252	138,49	227,96	183,815	29,838	5,031	218,684		

## Starfsmannafélag Reykjavíkurborgar alls.

MA	AR	<i>Karlar</i>					<i>Allir</i>						Km.dl.	<i>Konur</i>				
		STG	DL	YL	ÖL	HL	STG	DL	YL	ÖL	HL	STG		DL	YL	ÖL	HL	
7	2002	1.064,24	135.890	46.501	11.488	193.879	2.539,66	134.285	33.252	7.753	175.290	138,06	1.475,42	133.127	23.695	5.058	161.881	
8	2002	907,80	142.643	57.815	13.039	213.497	2.274,80	139.453	38.995	8.494	186.942	144,16	1.367,00	137.334	26.498	5.475	169.307	
9	2002	804,56	147.239	63.838	15.544	226.621	2.128,52	142.956	41.098	8.942	192.995	147,01	1.323,97	140.353	27.280	4.930	172.562	
10	2002	805,97	146.866	60.603	15.758	223.227	2.148,27	142.818	40.330	8.856	192.004	146,11	1.342,30	140.387	28.158	4.712	173.257	
11	2002	811,15	146.852	59.374	16.523	222.750	2.161,52	142.758	38.604	9.278	190.640	146,31	1.350,37	140.298	26.127	4.926	171.352	
12	2002	816,08	151.604	58.647	54.320	264.570	2.160,02	146.894	38.531	46.412	231.837	150,45	1.343,94	144.034	26.317	41.610	211.960	
1	2003	842,75	146.256	68.415	19.930	234.601	2.223,27	142.410	42.005	11.421	195.836	145,33	1.380,52	140.063	25.882	6.227	172.172	
2	2003	852,29	145.200	62.093	18.541	225.834	2.224,38	143.089	40.741	10.989	194.818	146,27	1.372,09	141.777	27.477	6.297	175.552	
3	2003	861,27	144.992	62.366	17.303	224.661	2.249,75	142.791	40.186	10.450	193.427	144,42	1.388,48	141.427	26.427	6.199	174.053	
4	2003	860,14	145.950	61.933	27.780	235.663	2.256,98	142.977	40.390	20.057	203.424	144,44	1.396,84	141.147	27.124	15.301	183.572	
5	2003	874,02	145.959	72.443	16.446	234.848	2.292,07	142.851	45.305	10.588	198.744	144,53	1.418,05	140.935	28.579	6.977	176.491	
6	2003	1.099,68	138.572	49.430	14.221	202.223	2.724,71	136.560	33.895	9.384	179.839	138,08	1.625,03	135.199	23.381	6.111	164.692	

## Félag íslenskra leikskólakennara hjá Reykjavíkurborg

MA	AR	<i>Karlar</i>					<i>Allir</i>						Km.dl.	<i>Konur</i>				
		STG	DL	YL	ÖL	HL	STG	DL	YL	ÖL	HL	STG		DL	YL	ÖL	HL	
7	2002						408,57	167.934	18.426	1.295	187.655	149,27						
8	2002						415,17	167.846	20.223	1.016	189.085	150,00						
9	2002						434,33	173.459	23.971	1.177	198.607	154,22						
10	2002						433,81	174.119	27.176	1.247	202.541	154,00						
11	2002						434,58	174.951	26.110	1.276	202.337	155,02						
12	2002						435,53	174.790	19.982	46.601	241.374	154,77						
1	2003						431,73	182.038	23.457	1.873	207.368	160,61						
2	2003						430,63	183.100	24.741	1.375	209.217	161,82						
3	2003						426,83	183.649	23.239	1.386	208.275	160,58						
4	2003						429,88	182.057	23.792	11.868	217.717	159,01						
5	2003						431,16	183.949	27.363	1.785	213.097	160,90						
6	2003						441,54	181.285	24.831	1.369	207.485	158,47						

## Sjúkraliðafélg Íslands hjá Reykjavíkurborg

MA	AR	Karlur					HL
		STG	DL	YL	ÖL	HL	
7	2002						
8	2002						
9	2002						
10	2002						
11	2002						
12	2002						
1	2003						
2	2003						
3	2003						
4	2003						
5	2003						
6	2003						

Allir						
STG	DL	YL	ÖL	HL	Km.dl.	
46,20	169.095	30.075	15.586	214.755	186,91	
45,39	168.527	21.573	10.294	200.394	187,29	
44,87	169.602	35.214	16.644	221.461	187,51	
45,41	170.460	21.053	20.525	212.037	187,48	
44,42	170.853	28.375	21.804	221.032	188,25	
45,27	170.396	23.572	52.644	246.611	187,62	
45,00	171.858	57.551	21.844	251.253	188,55	
44,82	173.615	25.613	27.505	226.733	190,80	
45,27	173.626	28.236	21.494	223.355	188,79	
45,86	172.570	26.488	32.105	231.164	187,42	
47,70	174.175	71.474	17.232	262.881	189,45	
49,22	173.730	36.237	21.325	231.292	188,84	

Konur				
STG	DL	YL	ÖL	HL

## Háskólamenn innan BHM hjá Reykjavíkurborg

MA	AR	Karlur					HL
		STG	DL	YL	ÖL	HL	
7	2002	69,83	264.570	63.172	915	328.657	
8	2002	71,00	266.585	62.388	669	329.643	
9	2002	71,73	268.189	72.207	175	340.570	
10	2002	72,85	269.681	74.178	1.260	345.119	
11	2002	72,65	271.079	81.918	589	353.586	
12	2002	72,58	275.807	93.800	34.827	404.435	
1	2003	72,59	270.134	74.699	11.204	356.037	
2	2003	71,74	271.286	78.035	10.921	360.242	
3	2003	72,45	267.763	76.512	10.639	354.914	
4	2003	71,95	271.749	80.048	19.823	371.620	
5	2003	72,80	270.060	78.129	12.715	360.904	
6	2003	79,40	265.034	69.526	9.797	344.357	

Allir						
STG	DL	YL	ÖL	HL	Km.dl.	
263,95	228.069	38.530	4.582	271.180	188,68	
272,16	229.365	37.744	3.810	270.920	190,78	
280,07	227.049	38.666	4.312	270.028	187,88	
280,65	228.577	39.307	4.528	272.412	188,16	
280,22	229.143	41.124	4.685	274.952	188,96	
282,52	231.826	45.583	38.236	315.646	191,04	
285,17	233.819	39.821	9.484	283.123	192,00	
284,27	233.887	40.965	9.545	284.397	192,38	
283,74	232.937	38.180	8.257	279.374	189,57	
284,07	232.738	41.494	17.187	291.419	189,18	
291,63	232.942	43.586	9.807	286.335	189,63	
303,46	230.774	38.336	8.137	277.248	187,75	

Konur				
STG	DL	YL	ÖL	HL
194,12	214.938	29.666	5.901	250.505
201,17	216.229	29.047	4.919	250.195
208,35	212.886	27.119	5.736	245.742
207,80	214.166	27.082	5.673	246.921
207,56	214.465	26.844	6.119	247.428
209,95	216.623	28.915	39.415	284.953
212,58	221.418	27.911	8.897	258.225
212,53	221.262	28.452	9.081	258.796
211,29	220.996	25.036	7.440	253.471
212,12	219.505	28.417	16.293	264.215
218,83	220.594	32.095	8.839	261.528
224,06	218.634	27.284	7.549	253.466

## Háskólamenn utan bandalaga hjá Reykjavíkurborg

MA	AR	Karlur					Allir						Km.dl.	Konur					
		STG	DL	YL	ÖL	HL	STG	DL	YL	ÖL	HL	STG		DL	YL	ÖL	HL		
7	2002						104,80	285.361	93.267	3.633	382.261	168,51							
8	2002						104,91	287.469	84.399	3.848	375.716	170,68							
9	2002						105,03	287.294	97.735	2.921	387.950	169,69							
10	2002						104,05	287.288	99.874	3.853	391.015	168,81							
11	2002						106,03	286.634	92.847	3.665	383.146	168,73							
12	2002						105,03	292.944	100.269	40.454	433.667	172,33							
1	2003						105,81	271.883	104.737	33.263	409.883	159,37							
2	2003						105,81	271.791	112.778	32.503	417.072	159,58							
3	2003						107,81	271.931	106.146	33.569	411.646	157,97							
4	2003						109,31	271.816	109.572	42.036	423.424	157,72							
5	2003						112,33	270.186	98.676	32.264	401.125	157,01							
6	2003						116,67	267.683	104.636	30.370	402.689	155,45							

## Kennarahópur hjá Reykjavíkurborg

Kaupmáttur miðast við 08/1996 = 100,00

MA	AR	Karlur					Allir						Km.dl.	Konur				
		STG	DL	YL	ÖL	HL	STG	DL	YL	ÖL	HL	STG		DL	YL	ÖL	HL	
7	2002	289,40	221.450	4.919	0	226.369	1.401,57	203.852	2.100	15	205.967	158,76	1.112,17	199.273	1.366	18	200.658	
8	2002	295,71	220.701	10.364	0	231.065	1.492,12	204.189	6.913	5	211.107	159,89	1.196,40	200.108	6.060	6	206.173	
9	2002	293,92	221.498	45.405	0	266.904	1.476,96	204.957	31.233	8	236.198	159,66	1.183,04	200.848	27.712	10	228.570	
10	2002	296,49	221.638	55.155	0	276.793	1.478,55	205.697	37.298	8	243.003	159,41	1.182,06	201.699	32.819	10	234.528	
11	2002	297,37	220.766	46.494	0	267.260	1.482,32	205.395	32.258	8	237.661	159,46	1.184,94	201.537	28.685	10	230.232	
12	2002	299,65	220.412	69.376	42.289	332.078	1.489,60	205.324	48.774	42.859	296.956	159,29	1.189,95	201.524	43.586	43.002	288.112	
1	2003	301,35	227.194	49.759	0	276.952	1.478,38	213.220	34.800	9	248.028	164,83	1.177,03	209.643	30.970	11	240.623	
2	2003	313,03	224.615	55.182	86	279.883	1.490,25	213.887	41.564	27	255.478	165,63	1.177,22	211.034	37.943	11	248.988	
3	2003	309,34	226.750	61.061	15	287.825	1.474,22	214.996	42.343	12	257.351	164,72	1.164,88	211.875	37.373	11	249.259	
4	2003	314,99	224.280	59.048	52	283.380	1.491,20	212.711	41.561	-204	254.068	162,78	1.176,21	209.613	36.877	-272	246.218	
5	2003	314,83	224.112	56.194	43.928	324.234	1.500,58	211.715	41.058	44.940	297.713	162,26	1.185,75	208.424	37.039	45.209	290.672	
6	2003	313,74	221.904	20.012	0	241.916	1.496,73	210.704	14.484	-229	224.959	161,38	1.182,99	207.734	13.018	-289	220.462	



## 4. Starfsmenn annarra sveitarfélaga

### 4.1 Inngangur

Ekki birtast nú nýjar tölur um önnur sveitarfélög vegna starfsmannaskorts. Birtar eru sömu tölur og voru í síðasta fréttariti KOS.

KRN og KOS hafa undanfarið safnað launaupplýsingum frá sveitarfélögum víðsvegar að landinu. Áfram verður haldið að safna og birta upplýsingar frá kaupstöðum og sveitarfélögum sem hafa fleiri en 1000 íbúa.

Jafnframt munu upplýsingarnar verða notaðar í úrtak Hagstofu fyrir launa-

vísitölu og vegna tölfræðivinnslu KRN fyrir þá starfsmenn sveitarfélaganna, sem eru innan ASÍ.

## 4.2 Meðaltöl hjá nokkrum sveitarfélögum árið 2001

Akranes, Akureyri, Árborg, Bessastaðahreppur, Borgarbyggð, Dalvík, Garðabær, Gerðahreppur, Grindavík, Hafnarfjörður, Kópavogur, Mosfellsbær, Reykjanesbær, Seltjarnarnes, Skagafjörður, Vestmannaeyjar og Ölfushreppur

### Allir í starfsmannafélögum

Ár	Mán./áfj.	Stg.	DI.	YI.	ÖI.	HI.
2001	1	1.748,84	108.950	16.006	12.415	137.372
	2	1.771,92	110.515	25.288	17.237	153.039
	3	1.843,04	109.571	26.663	16.510	152.743
	4	1.837,85	112.313	26.890	22.579	161.781
	5	1.939,25	121.207	28.294	31.453	180.954
	6	2.034,75	123.372	28.590	35.340	187.312
	7	1.976,94	117.274	25.860	17.041	160.175
	8	1.999,07	113.945	23.676	18.233	155.844
	9	1.908,01	120.587	25.401	19.647	165.635
	10	1.945,99	121.522	28.627	18.092	168.241
	11	1.979,17	119.277	27.478	43.468	190.223
	12	1.935,63	122.520	34.478	48.313	205.311
2001	1.fj.	1.787,93	109.680	22.734	15.415	147.829
	2.fj.	1.937,28	119.152	27.954	30.008	177.117
	3.fj.	1.961,34	117.217	24.969	18.291	160.474
	4.fj.	1.953,60	121.093	30.171	36.642	187.907

### Leikskólakennarahópur

Ár	Mán./áfj.	Stg.	DI.	YI.	ÖI.	HI.
2001	1	412,68	120.163	21.400	9.817	151.381
	2	416,98	134.958	32.232	12.963	180.153
	3	426,28	170.439	32.161	14.969	217.570
	4	356,67	176.656	30.908	14.719	222.294
	5	441,73	160.856	28.194	14.648	203.699
	6	452,54	159.910	27.906	14.021	201.837
	7	436,42	156.486	22.121	9.755	188.362
	8	414,95	159.130	19.086	11.482	189.708
	9	361,56	158.421	28.144	12.096	198.671
	10	442,63	163.004	30.935	10.333	204.262
	11	443,43	163.207	34.272	27.433	224.913
	12	324,21	164.623	36.864	41.959	243.436
2001	1.fj.	418,65	142.140	28.649	12.610	183.399
	2.fj.	416,98	165.019	28.864	14.442	208.327
	3.fj.	404,31	157.967	22.878	11.044	191.896
	4.fj.	403,42	163.512	33.746	25.071	222.322

### Kennarahópur

Ár	Mán./áfj.	Stg.	DI.	YI.	ÖI.	HI.
2001	1	1.052,58	137.317	12.698	2.546	152.561
	2	1.072,25	137.707	59.940	11.442	209.099
	3	1.064,97	150.350	68.583	17.187	236.121
	4	1.070,58	143.952	67.565	9.970	221.478
	5	1.072,43	143.815	69.251	10.465	223.531
	6	1.068,41	142.819	74.576	20.800	238.196
	7	1.040,35	144.256	11.250	3.703	159.199
	8	1.080,66	184.654	3.861	3.166	191.682
	9	1.025,22	191.047	13.361	8.734	213.152
	10	934,20	200.355	37.142	8.935	246.431
	11	1.086,37	202.089	36.635	9.094	247.818
	12	1.213,99	188.200	59.764	42.879	290.832

Ár	Mán./áfj.	Stg.	DI.	YI.	ÖI.	HI.
2001	1.fj.	1.063,27	141.800	47.237	10.425	199.464
	2.fj.	1.070,47	143.529	70.461	13.739	227.725
	3.fj.	1.048,74	173.379	9.400	5.158	187.937
	4.fj.	1.078,19	196.375	45.462	21.728	263.562

#### Aðrir starfsmenn utan starfsmannafélaga

Ár	Mán./áfj.	Stg.	DI.	YI.	ÖI.	HI.
2001	1	707,88	137.674	21.712	9.725	169.101
	2	698,33	140.119	49.495	14.136	203.726
	3	503,25	145.507	54.337	20.576	220.420
	4	661,02	145.358	51.558	13.093	209.972
	5	629,31	150.533	59.972	17.553	228.029
	6	681,26	163.731	58.641	19.332	241.706
	7	682,07	142.699	16.871	8.412	167.982
	8	713,52	175.890	11.389	7.384	194.681
	9	739,73	182.858	16.071	6.783	205.712
	10	706,09	185.471	39.032	11.750	236.243
	11	736,99	188.685	39.847	18.143	246.665
	12	760,85	179.938	61.555	49.087	290.555
2001	1.fj.	636,49	140.633	40.471	14.198	195.290
	2.fj.	657,20	153.358	56.691	16.673	226.701
	3.fj.	711,77	167.702	14.762	7.504	189.974
	4.fj.	734,64	184.635	47.080	26.778	258.478

## 5. Ýmislegt

### 5.1 Vísitala neysluverðs (framfærsluvísitala) með grunn 1981:

Hér að neðan er yfirlit yfir þróun vísitölu neysluverðs, eins og hún er útgefin af Hagstofu Íslands.

Þessi grunnur er notaður í útreikningum KOS, þegar vegið er með neysluverðs-vísitölunni.

#### Vísitala neysluverðs frá 1981 samkvæmt Hagstofu Íslands

Álm.	jan.	feb.	mar.	apr.	maí	jún.	júl.	ágú.	sep.	okt.	nóv.	des.
1981	100,00	101,60	104,70	109,40	109,80	115,70	118,30	119,60	124,30	127,50	131,50	138,70
1982	141,10	144,30	152,00	158,80	159,90	168,80	173,60	178,80	194,00	202,10	210,10	221,70
1983	230,90	241,90	267,20	285,40	298,50	327,20	340,00	362,50	365,20	376,50	386,90	391,60
1984	394,40	397,00	401,30	407,00	410,60	420,20	424,10	430,70	433,40	438,20	443,80	465,30
1985	485,40	502,10	515,70	524,40	535,40	545,30	558,50	575,30	590,20	603,30	616,60	632,50
1986	651,10	666,00	655,80	659,80	671,10	675,50	678,40	686,10	694,20	697,20	711,50	718,00
1987	734,60	745,40	756,50	767,00	776,40	791,90	805,80	825,80	835,20	849,00	876,10	893,40
1988	926,60	934,40	943,00	956,60	973,40	1.006,90	1.041,80	1.063,40	1.071,20	1.074,80	1.075,50	1.077,50
1989	1.095,50	1.112,00	1.142,50	1.167,30	1.190,30	1.225,40	1.233,90	1.250,50	1.275,90	1.301,10	1.320,70	1.349,30
1990	1.355,70	1.377,80	1.389,20	1.393,40	1.406,00	1.415,70	1.425,00	1.429,40	1.429,20	1.433,10	1.442,90	1.446,40
1991	1.455,50	1.459,80	1.463,30	1.470,10	1.487,70	1.508,20	1.518,00	1.529,70	1.538,90	1.551,00	1.557,50	1.555,80
1992	1.559,60	1.566,10	1.563,30	1.563,20	1.562,10	1.567,60	1.571,50	1.571,50	1.569,90	1.570,90	1.570,90	1.579,10
1993	1.597,50	1.608,50	1.610,40	1.615,00	1.618,80	1.617,80	1.632,20	1.647,30	1.652,50	1.662,20	1.662,20	1.654,00
1994	1.648,30	1.649,90	1.651,80	1.653,80	1.653,80	1.655,70	1.658,60	1.659,60	1.664,50	1.662,50	1.661,60	1.662,50
1995	1.675,20	1.677,10	1.674,20	1.672,30	1.675,20	1.677,10	1.682,00	1.688,80	1.694,70	1.702,40	1.696,60	1.695,60
1996	1.702,40	1.705,40	1.708,30	1.711,20	1.721,90	1.720,00	1.721,90	1.732,60	1.736,50	1.737,50	1.738,50	1.730,70
1997	1.736,50	1.737,50	1.736,50	1.749,20	1.746,20	1.750,10	1.753,10	1.757,90	1.764,70	1.770,60	1.768,60	1.765,70
1998	1.754,40	1.771,60	1.778,40	1.782,30	1.788,10	1.791,00	1.787,10	1.777,40	1.779,30	1.787,10	1.792,0	1.788,70
1999	1.798,80	1.795,90	1.804,60	1.814,40	1.823,10	1.838,20	1.844,20	1.851,20	1.867,00	1.881,60	1.881,70	1.888,10
2000	1.902,60	1.897,50	1.911,50	1.923,40	1.930,80	1.938,50	1.948,20	1.938,20	1.942,20	1.961,60	1.966,90	1.966,70
2001	1.970,30	1.973,90	1.985,60	2.009,90	2.038,10	2.069,30	2.085,30	2.092,00	2.105,80	2.119,30	2.126,60	2.136,50
2002	2.156,20	2.150,30	2.159,40	2.160,30	2.159,40	2.168,70	2.170,60	2.158,90	2.170,10	2.181,40	2.177,50	2.179,00
2003	2.186,80	2.183,10	2.206,50	2.209,10	2.205,80	2.207,20	2.205,10	2.203,10	2.218,70			

REGLUGERÐ UM NEFND UM KJARARANNSÓKNIR  
OPINBERRA STARFSMANNA

1. gr.

Nefnd um kjararannsóknir opinberra starfsmanna starfar í þeim tilgangi að safna saman og miðla upplýsingum um kjör starfsmanna hjá opinberum aðilum, kjör annarra launþega og þróun launa og kjaramála almennt til þeirra, sem að nefndinni standa, sbr. 4. gr.

2. gr.

Nefndin aflar upplýsinga um kjör, sbr. 1. gr., sem hér segir:

1. Með söfnun, skipulagningu og skráningu upplýsinga um laun og önnur kjaraatriði opinberra starfsmanna, sem aðilar að nefndinni leggja henni til.
2. Með öflun og skipulegri skráningu upplýsinga frá öðrum aðilum, sem stunda reglubundnar kjararannsóknir.
3. Með gerð sérstakra athugana, sem aðilar að nefndinni ákveða hverju sinni.

3. gr.

Nefndin miðlar upplýsingum til þeirra opinberu vinnuveitenda, sem láta nefndinni í té upplýsingar og stéttarféлага starfsmanna þeirra með reglulegum skýrslum og sérstökum skýrslum eftir því sem við á.

Allar upplýsingar, sem safnað er eða unnar eru á vegum nefndarinnar, aðrar en þær, sem nefndin birtir, sbr. fyrri málsgrein, eru trúnaðarmál og er einstökum aðilum að nefndinni óheimilt að notfæra sér þær eða birta án samþykkis allra nefndarmanna.

4. gr.

Nefndin er skipuð 10 fulltrúum. Tveir fulltrúar vinnuveitenda eru tilnefndir af fjármálaráðherra, einn af launaneftnd sveitarfélaga, einn af Reykjavíkurborg og einn úr hópi forsvarsmanna sjálfseignarstofnana samkvæmt nánari ákvörðun fjármálaráðherra.

Þrír fulltrúar launþega skulu tilnefndir af BSRB, einn af BHMR og einn af KÍ. Nefndin skiptir með sér verkum og ákveður sér framkvæmdastjórn.

5. gr.

Nefndin setur sér starfsreglur, m.a. um starfssvið og starfshætti og ákveður nánar með hvaða hætti hún hagar störfum að verkefnum skv. 1.-3. grein. Nefndin skal kosta kapps um að skapa einhug um lausn þeirra verkefna sem henni eru falin. Ákvarðanir um verkefni og birtingu á niðurstöðum verða ekki teknar með afli atkvæða.

6. gr.

Kostnaður vegna starfa nefndarinnar greiðist úr ríkissjóði samkvæmt fjárveitingum í fjárlögum. Nefndin ræður sér sjálf starfsmenn.

7. gr.

Reglugerð þessi er sett samkvæmt lögum nr. 94 31. desember 1986, um kjarasamninga opinberra starfsmanna og öðlast þegar gildi.

Fjármálaráðuneytið 7. júlí 1987

Þorsteinn Pálsson (sign)  
Indriði H. Þorláksson (sign)



**Kjararannsóknarnefnd  
opinberra starfsmanna  
Borgartúni 21, 105 R.**